

Acesonic®

THE LEADER IN PROFESSIONAL SING-ALONG EQUIPMENT



**PRODUCT
CATALOG**
2014
WWW.ACESONIC.COM



ABOUT US

B

ased in Southern California USA, Acesonic is the leading manufacturer of sing-along products, providing a diverse selection of high-quality karaoke equipment to enthusiasts all across the world. Since the company's inception in 2001,

Acesonic has been supplying the most modern and innovative products while remaining competitive in our pricing. As a result, consumers have begun to equate our brand name with excellence as well as affordability.

This year, Acesonic continues to offer a wide selection of karaoke players, mixers, amplifiers, speakers, microphones and other related accessories. Our 2014 product line is proud to introduce several new products which feature the latest in karaoke and audio technology.

Over the years, Acesonic has developed one of the best reputations in the business. Our commitment to upholding excellence and leadership in the karaoke industry is shared by every aspect of the company, from production to sales, as we strive to continuously expand and improve to meet the demands of an ever-growing karaoke market from now and beyond.



JOIN THE "ACE" TEAM!

A

cesonic is always looking for new dealers and distributors. Karaoke is a fast-growing industry and the demand for quality, affordable karaoke hardware and software is as high as ever! Let us help you capitalize on this demand and convert opportunity into growth for your business.

As a dealer, you will enjoy

- High profit margins
- Lifetime, year-round customer, technical and repair support
- **1 Year Manufacturer Warranty** for your customers
- Unlimited stock rotations
- Discounted display units and free advertising materials
- No-hassle return service
- Convenient payment terms
- Product and sales training
- Drop-shipping for your customers

If your business meets the requirements listed below, don't wait...apply today!
The application process is quick and easy, and can be completed within one day.

Dealer requirements

- Government recognized resale certificate or seller's permit (or equivalent for your area)
- Proof of physical or online store
- A completed and signed reseller's declaration form (we will provide the form)
- A completed payment authorization form (we will provide the form)
- Orders placed in carton quantities
- Minimum first order of \$1,000



MAP POLICY

I

n order to maintain brand integrity and quality, Acesonic has established a Minimum Advertised Price (MAP) policy that authorized dealers must adhere to when advertising and marketing Acesonic products. All authorized Acesonic resellers must agree to the following MAP policy:

All advertised prices, including but not limited to print, broadcast, internet, billboard and other media formats, must be at or above Acesonic's MAP pricing. Our MAP pricing can be obtained through our designated Acesonic sales representative. Resellers are not required to list prices in advertising, however, if it is listed it must be at or above our MAP prices. While resellers are responsible for ensuring their advertised prices are at or above MAP pricing, resellers are also free to set the actual resale price of Acesonic products however they wish.

Failure to comply with our MAP policy may result in loss of authorized reseller/ dealer status, either temporarily or permanently. The decision to revoke, suspend or terminate relationship with reseller for MAP policy violations will be at the sole discretion of Acesonic, and may occur without warning.



DROP SHIP

A

cesonic is proud to offer drop shipping for our resellers to

anywhere in the US and Canada, with no minimum order and a small drop ship fee. In-stock items will ship within one (1) business day.

1 Year Warranty on all our products

www.acesonic.com

Acesonic USA Inc.
161 S. 8th Avenue,
City of Industry, CA 91746

toll free: +1.888.976.7464
phone: +1.626.820.0645
fax: +1.626.820.0673
email: sales@acesonic.com

International Offices

Hong Kong
Phone: +86.2.036859042
Fax: +86.2.036853499

Taiwan
Phone: +886.2.26597511
Fax: +886.2.26597510

INNOVATION, COMPATIBILITY, FLEXIBILITY, VALUE & DESIGN
FOR MAXIMUM PERFORMANCE & ENTERTAINMENT IN MIND



THE GOODS

01.....HARD DRIVE PLAYER

03.....KaraokeCloud™ DEVICES

05.....HD MULTI-FORMAT PLAYERS

07.....SPEAKER SYSTEMS

09.....SURROUND SOUND SYSTEMS

11.....MIXING AMPLIFIERS

16.....MIXER

17.....WIRELESS MICROPHONES

19.....WIRED MICROPHONES

20.....PORTABLE SYSTEMS

20.....ACCESSORIES

Acesonic
www.acesonic.com

KOD-3000

Dual Hard Drive Network
Blu-ray Disc™ Karaoke Jukebox

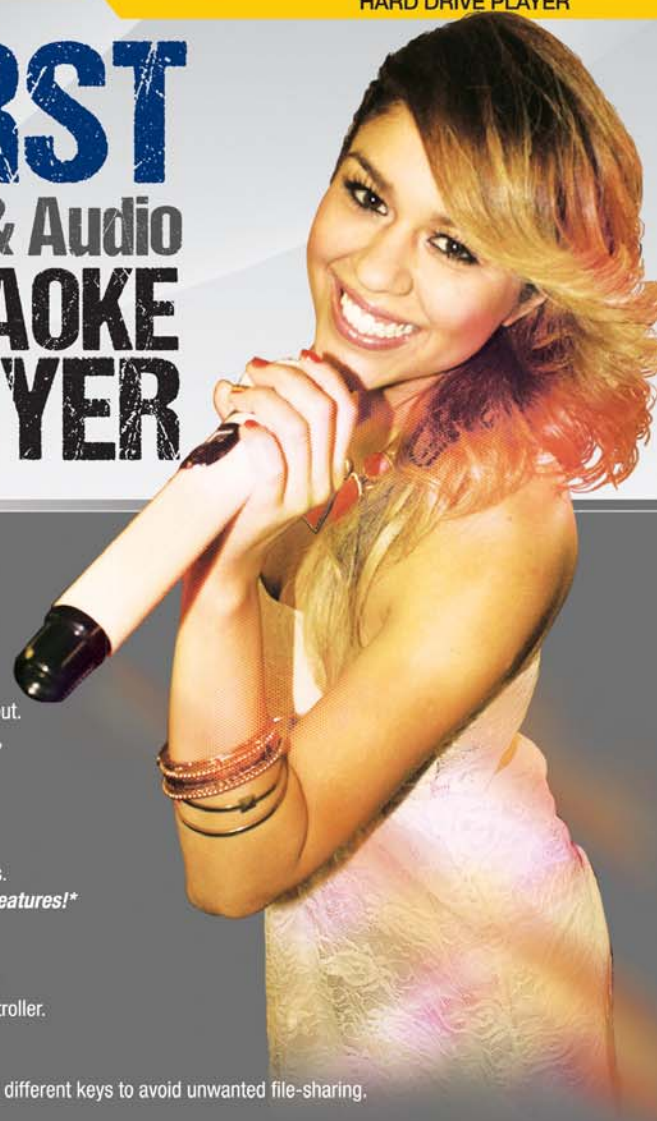


iPad®, tablet and TV not included.



The KOD-3000 now have unlimited access
to over 10,000 karaoke tracks FREE on KaraokeCloud™

WORLD'S FIRST Blu-ray Disc™ Video & Audio Network KARAOKE PLAYER



- Blu-ray Disc™ playback delivers exceptional full HD 1080p video resolution.
- Rip DVD, CD+G & VCD discs - Capture your karaoke CD+Gs, DVDs and VCDs into the hard drive.
- Blu-ray File Play - Using a computer, copy and paste the contents of an unprotected Blu-ray Disc into a folder of the KOD-3000's hard drive.
- Internet access allows you to download additional contents for your karaoke library.
- Upscaling delivers exceptional image quality from standard DVDs with up to 1080p via HDMI output.
- Multi-format feature supports all types of karaoke and video formats i.e. CD+G, MP3G, MP3, MKV, MPEG1/2/4, WMV, RMVB, AVI and more!
- MP3+G Superimpose - Replace any MP3+G's background with your video or pictures.
- Smart search by song number, name, artist or by category.
- Song Import - Quickly update your song library using batch imports/uploading.
- Media Center allows you to enjoy your family photos, videos or simply listen to your favorite tunes.
- **Use your iPad® or Android tablets as a fully functional remote control or for song search features!***
- 1 Front USB 2.0 port for adding songs, media playback
- Unlimited song capacity expansion via attached network drive
- Multiple KOD-3000 players (with or without a local hard drive) can be attached to a network drive
- RS-232 port can be connected to a coin-acceptor, receive commands from a PC, or a central controller.
- Internal hard drive bays support two internal 2TB hard drives for a total capacity of 4TB
- Supports Unicode up to 20 different languages.
- Built-in multiple-key encryption to protect all of your content and separate users can be assigned different keys to avoid unwanted file-sharing.
- Future Updates - Firmware updates with new features will be released

KOD-3000 Rear Panel

1. 100-240V AC In
2. Cooling Fan
3. RCA Video Output
4. RCA Audio Output
5. HDMI Output
6. Optical Output
7. Ethernet Port
8. RS232 Port
9. IR
10. Hard Drive Housing
11. Component Video Outputs
12. Coaxial Input



Specifications

- Media Type: BD-ROM, BD-R, BD-RE, DVD, DVD±R, DVD+RW, VCD
- BD Profiles: Profile 1.1 (Bonus View), Profile 2.0 (BD-Live)
- Video D/A Converter: 12bit/148.5MHz
- Audio D/A Converter: 24bit/192kHz
- Sophisticated Karaoke Functions
 - Dynamic Changing Background Video in MP3G
 - Song Database Management
- 1 x HDMI Connection Output (HDMI 1.3)
- 1 x CVBS Output
- 1 x YPbPr Output
- 1 x Optical Output
- 1 x Coaxial Output
- 1 x USB 2.0 Ports

INCLUDES

- Remote Control
- 2 AAA Batteries

- 1 x Ethernet Network Interface (RJ-45)
- 2 x Microphone Inputs
- 120V-240V Compatible
- 1 Year Manufacturer Warranty

Multi-format Media Support

- Audio: MP3/LRC, AC3, AAC, WMA, WMAPro
- Video: MPEG1/2/4, Xvid, ISO, MKV, AVI, RMVB, WMV9, VC1, H.264

Karaoke-On-Demand Total Solution

- IP-Based Media Streaming
- Secure Media Connectivity
- Download Protection for all types of content



Acesonic®

The Leader In Professional Sing-Along Equipment



*Download the free app



SING PLAY RECORD SHARE!

SING-N-JAM™ Mixer for iOS & Android® Devices



iPad® not included.



Specifications

- 2-Channel hi-Z pre-amp
- Analog-to-Digital Converter
- Speaker Out + Headphone Out
- Volume control + Echo control
- Recording software compatible
- Compatible with any iOS or Android® device with a mini-headphone jack
- Two 1/4" microphone or instrument inputs
- Rechargeable through USB

SING-N-JAM™ is a compact 2-channel mixer that lets anyone sing and play along with music on their phone, tablet or MP3 player. Includes two microphones and all the connectors you need to start singing and playing right away!

SING

Plug in one or both microphones to enjoy instant singing fun, solo or with a friend. Built-in adjustable echo effects help you sound your best!

PLAY

Included adapter lets you plug in your electric instruments - guitars, keyboards and more - and play along with the music. Includes the Play-A-Tab™ guitar learning system.

RECORD

Rock out all you want - the included app lets you save your solo, duet or instrumental performances for later, including the background music!

SHARE

Love what you've created and want to show the world? It's easy to share your performances on your social networks with the included KaraokeCloud™ app!

INCLUDES

- Sing-N-Jam™ Karaoke Mixer
- 2 Microphones
- 1/4" to Mini-Jack Adapter
- USB Cable
- Mini-Jack Stereo Cable
- Mini-Jack to RCA Audio Cable

Unlimited
access to over
10,000 karaoke songs.



Download the free app

Available on the
App Store

ANDROID APP ON
Google play

KARAOKE ON-THE-GO!

SING-N-SHARE™

Pro Portable Mic for iOS & Android® Devices



Specifications

- 2-Channel hi-Z pre-amp
- Analog-to-Digital Converter
- Speaker Out + Headphone Out
- Volume control + Echo control
- Recording software compatible
- Mini-headphone jack
- Two 1/4" microphone or instrument inputs

Available in

- Black mic for iOS
- Black mic for Android®
- White mic for iOS
- White mic for Android®



Unlimited
access to over
10,000 karaoke songs.

Download the free app



Available on the
App Store

ANDROID APP ON
Google play

SING-N-SHARE™ combines everything you need to begin singing like a pro right away: access to 10,000 songs, a portable high-quality microphone, vocal effects, and a smartphone application that turns wherever you are into an instant vocal studio!

SING

all your favorite songs mixed with your voice, right from your smart phone! Over 10,000 great tunes available through KaraokeCloud.com™

SHARE

with a friend using the two headphone jacks, or with the whole world on social networks using the included KaraokeCloud™ app!

RECORD

Rock out all you want - the included app lets you save your solo, duet or instrumental performances for later, including the background music!



Acesonic®

The Leader In Professional Sing-Along Equipment

PROFESSIONAL Blu-ray Disc™ WITH KARAOKE & USB MEDIA PLAYER



BDK-2000

Blu-ray Disc™ Multimedia Karaoke Player
with Digital Recording & CD+G Ripping



- Capture CDs or CD+ discs to MP3 or MP3+G at 1x or 4x the speed.
- Multi-format compatibility: Blu-ray™, BD-ROM, BD-R, BD-RE, BD-R DL, BD-RE DL, DVD, DVD±R, DVD+RW, CD-DA, CD-R, CD-RW, VCD, CD+G, Audio CD and data discs.
- Compatible formats: MP3, MP3G, WAV, WMA, MPEG-1, MPEG-2 (MPG/VOB), MPEG-4 (AVI), DivX, XviD, RMVB, DAT, ISO, M2TS, MKV, MOV and JPEG files
- Record your acapella, speech or dictation through the microphone in CD quality
- Record your singing while playing a CD or CD+G and save your track as an MP3.
- Play all your media from discs or USB drives in HD quality up to 1080p.
- Index your songs
- Two USB 2.0 ports (front & back)
- Supports NTFS hard drives of over 2TB.
- BD-ISO & DVD-ISO Support.
- Direct access with front panel keys.
- LAN ready lets you play online BD-Live streaming content.
- Two microphone inputs lets you sing-along or annotate.
- Microphone bass, treble, volume and echo adjustment.
- ±7 Half-step key controls.
- 3.5mm stereo headphone output jack
- Rackmountable

Specifications

- 1 x HDMI 1.3 output
- 1 x CVBS output
- 1 x RCA Audio output
- 1 x YPbPr output
- 1 x Optical output
- 1 x Coaxial output
- 2 x USB 2.0 Port (1 front, 1 rear)
- 1 x Ethernet 10/100 mbps port
- 2 x ¼" Microphone inputs

INCLUDES

- Remote Control
- 6FT RCA Cable
- Rackmount Kit



BDK-2000 Rear Panel

1. 100-240V AC In
2. Component Video Outputs
3. CVBS Output
4. RCA Audio Outputs
5. HDMI 1.3 Output
6. Coaxial Output
7. Optical Output
8. USB 2.0 Port
9. Ethernet 10/100 mbps port



ENTERTAIN IN HIGH-DEFINITION, PLUS RECORD YOUR KARAOKE PERFORMANCES!



DGX-213

HDMI Multi-Format Karaoke Player
with 4X CD+G to MP3G Converter & Digital Recording



- Multi-format karaoke player with full 1080p high definition video output.
- Captures CD or CD+G disc to MP3 or MP3+G at 1x or the faster 4x speed!
- Convert all your CD+G discs into MP3G and store them on SD cards, external hard drives or USB flash drives.
- Digitally record your singing into an MP3G file to USB or SD Card with the push of a button!
- 1 HDMI Port allows connection from player to your TV for both audio and video, including microphone audio. You can turn any HDMI Monitor into a karaoke screen.
- Direct Access Front Panel Design: Open, Close, Play, Pause, Previous, Next, 0-9 Number, Key, Microphone Volume, Echo Volume
- Simultaneous dual-screen display on HDMI and RCA output perfect for KJs!
- Built-in professional mixer
- Plays most downloaded karaoke tracks that are in MP3G format.
- ± 6 Steps Key Control
- Headphone Output
- Two $\frac{1}{4}$ " Microphone Inputs with Individual Volume Control
- Upgradeable Firmware with future software to enhance the player's functions
- Rackmountable

Specifications

- Compatible with MP3, CD, VCD, CD+G, MP3G, DVD, AVI, MP4, DivX
- Signal system: PAL/NTSC/AUTO
- Video output: HDMI, VGA, Composite Video, S-Video, Component Video
- Audio output: 2 Channel, 5.1 Channel, Optical and Coaxial
- Power AC 100~240V 50/60Hz
- Standard 2U height
- Dimensions: 17"L x 8.5"W x 2.5"H
- Weight: 3 Lbs
- 1 Year Manufacturer Warranty

INCLUDES

- Remote Control
- Power Cord
- RCA Cable



DGX-213 Rear Panel

1. Component Video Outputs
2. Coaxial Output
3. HDMI Output
4. S-Video Output
5. Optical Output
6. Karaoke Output
7. 5.1 Surround Sound Audio Outputs
8. VGA Output
9. 100-240V AC In



Acesonic

The Leader In Professional Sing-Along Equipment

POWER YOU CAN FEEL QUALITY YOU CAN HEAR

PS-420

400-Watt Professional 10" Powered Stereo Speaker System

- 400 Watts Dual 10" Power Speaker
- Music Bass, Treble Volume Control
- Microphone Echo & Volume Controls
- Two XLR Microphone Inputs
- RCA Audio Line Input & Output
- Speaker Stand Mountable



SS-689

Professional Heavy Duty Speaker Stands (Pair)

- 2 Steel Constructed Universal Mounting Bracket Included
- Height: 36"-72"
- Weight: 15 lbs each
- Load Capacity: 88 lbs each



Specifications

- Max Power Output: 400W (200W + 200W)
- 10" Woofer with High Temperature Voice Coil
- 2" Mid-Range Driver
- Frequency Response: 20Hz - 20KHz (± 3 dB)
- Microphone Input Sensitivity: < 25 mV
- Echo Delay: $> 8\Omega$
- Input Sensibility: < 250 mV
- Max Input Signal: 3Vp-p- Signal-to-Noise ratio: > 80 dB
- 115 - 230V Selectable
- Speaker stand holes for easy mounting
- Dimensions: 13"L x 10"W x 20"H
- Weight: 19.25 lbs
- 1 Year Manufacturer Warranty

INCLUDES

- SpeakOn Cable
- Power Cord



PS-420 Rear Panel

1. Volume, Bass, Treble Controls
2. Microphone Volume Control
3. Microphone Echo Control
4. XLR Microphone Inputs
5. Speaker Connector
6. Audio Input
7. Voltage Selector



Specifications

	a. SP-580 120-Watt Heavy-Duty Speaker System	b. SP-450 300-Watt Professional Vocal Speaker System	c. SP-280 120-Watt 8" Speaker System	d. SP-265 100-Watt 6.5" Speaker System
Max Power Output	120W each	300W each	120W each	100W each
Frequency Response	50 - 18KHz	55Hz - 20KHz	55Hz - 20KHz	55Hz - 20KHz
RMS	80W each	200W each	80W each	60W each
Impedance	8Ω	2 - 8Ω	Low/Mid - 8Ω, High - 4Ω	Low/Mid - 8Ω, High - 4Ω
Sensitivity	90dB	92dB	90dB	90dB
Woofer	8"	10"	8"	6.5"
Mid-Range	2"	none	none	none
Tweeter	1"	2 x 3"	2 x 3"	3"
Weight	21 lbs each	25 lbs each	17.25 lbs each	8 lbs each
Dimensions (LxWxH)	10.8" x 17.5" x 10"	20.27" x 11.4" x 11.8"	17.5" x 11" x 10.5"	8.25" x 12" x 6.75"
	<ul style="list-style-type: none"> • Only speaker with woofer, mid-range and tweeter • Sustains continuous use and maximum volume • Ported speaker enclosure • Ceiling-mount and speaker stand mount compatible 	<ul style="list-style-type: none"> • Type: 2-Way, 3-Speaker Bass-Reflex Type • Attractive three-dimensional curved design • Banana Plug connector style interface • Ceiling-mount and speaker stand mount compatible 	<ul style="list-style-type: none"> • Ported speaker enclosure 	<ul style="list-style-type: none"> • Ported speaker enclosure



FEEL HEAR EXPERIENCE

The Ultimate in Surround Sound Technology



SP-710

7.1 Surround Sound Karaoke / Home Theater Speaker System

a.



a. Front Speakers

Max Power Output	200W + 200W
Frequency Response	32Hz - 20KHz
Drive Units	1" + 6.5" X 3 @8Ω
Sensitivity	90dB

b. Center Speaker

Max Power Output	160W
Frequency Response	65Hz - 20KHz
Drive Units	1" + 4" X 2 @8Ω
Sensitivity	87dB

c. Surround Speakers

Max Power Output	120W + 120W
Frequency Response	65Hz - 20KHz
Drive Units	1" + 4" @8Ω
Sensitivity	87dB

d. Subwoofer

Max Power Output	
Frequency Response	
Drive Units	
<ul style="list-style-type: none"> • Built in 150-Watt Amplifier • Reinforced cellular woofer construction • Cleaner audio output • Motion feedback technology • Noise-Cut Circuit • Controls volume, low-pass crossover • Line level input 	

b.



c.



d.

HKR-710

340-Watt 7.1 Surround Sound Karaoke Receiver with HDMI Switch & Up Conversion



- 3 HDMI Inputs and 1 HDMI Output - 1 Front Panel HDMI Input for convenience
- Up-Conversion - 3 RCA AV Input is upconverted to HDMI 1080p Output
- 1 Front-Panel RCA Audio/Video Aux Input to easily connect your portable device.
- iPod®, iPad® and tablet ready with a front USB power connector that supplies 2A of power for tablets or USB powered devices.
- Utilizes the latest chip that is capable of decoding most of the popular audio formats
- Multiple Audio Modes (RCA Only): Can be set to 2 channels, 3.1 channels, 5.1 channels or 7.1 channels surround sound mode for home theater
- Exclusive Karaoke 3.1 channels, 5.1 channels or 7.1 channels mode allow users to fill all speakers with the same output as the front right and front left speakers.

Receiver Functions

- 8 DSP Sound Effects
- Large VFD Display
- 1 L/R Record Output
- 7 Speakers Banana Output
- Subwoofer Output via RCA Output
- AM/FM Radio Turner with 10 Pre-Set Station for each Band
- Auto Station Scan for FM/AM Radio

Karaoke Functions

- Master Music Volume Adjustment Knob
- 3 Microphone Inputs: 2 in front, and 1 in rear (ideal for wireless microphone)
- 3 Individual Microphone Volume Controllers
- ±6 - Step Key Controller
- Microphone Treble & Bass Controller
- Digital Echo, Delay and Repeat Adjustment Knob
- Multiplex Selection Button for Mono Left, Mono Right or Stereo Output

Specifications

- 3 Standard ¼" Microphone Inputs: 2 Front, 1 in Rear with individual volume controller
- 1 AM/FM Radio Tuner with Antenna Connector for AM/FM Band
- Optical Input and Coaxial Input
- 1 Front Panel RCA Audio/Video Input
- 1 Front Panel HDMI Input
- 1 3.5mm Headphone Jack Output
- 1 Composite Video Output with HDMI down conversion function to see HDMI video in 480p
- Power Output:
 - Front Speakers 80 Watts x 2 RMS
 - Center Speaker: 80 Watts RMS
 - Surround Speakers: 25 Watts x 4 RMS
- 110V/220V Voltage Switch for Worldwide Compatibility
- Dimensions: 17.1"W x 17.32"D x 6.25"H
- 1 Year Manufacturer Warranty
- Designed in U.S.A.

INCLUDES

- Remote Control
- 2 AA Batteries
- Power Cord

HKR-710 Rear Panel

1. Cooling Fan
2. Rear Surround Sound Speakers Outputs
3. Front/Center Surround Sound Speakers Outputs
4. Subwoofer Output
5. Record Out
6. Surround Sound Audio Inputs
7. Component Audio Inputs
8. 110-220V AC In
9. Power ON/OFF Switch
10. 110-220V Voltage Selector Switch
11. Optical Output
12. Component Video Inputs
13. Coaxial Output
14. Video Out
15. HDMI Output
16. #3 Microphone Input
17. #3 Microphone Volume Control
18. HDMI1 & 2 Inputs
19. Antenna Connector



Acesonic

The Leader In Professional Sing-Along Equipment

PC-to-USB

MIXING AMPLIFIERS



KJV-835

**400-Watt
Professional Vocal
Mixing Amplifier
with 3.5" LCD
Monitor/ MP3G Player
& Recorder**



- PC-to-USB Interface for pure digital simultaneous Playback & Recording (Windows XP, Vista & 7)
- 400 Watts Max Power Output
- 3.5" Built-In LCD Screen to monitor and 2nd A/V source
- Headphone Output for 2nd A/V source
- LCD Status Screen to Display: Key, Main Input Source, Monitor Input Source and Multiplex
- Built-in MP3G Recorder and Player Module
- 4 Audio/Video Inputs: DVD/AUX/PC/MP3G Module
- 2 Component Video Inputs: DVD/AUX and 1 Component Video Output
- 1 RCA Audio/Video Output
- 1 PC Input (Composite Video + USB Port)
- Auto Input Selector
- L/R Multiplex Channel Output Selector
- Music Low, Mid, High, Balance, Volume Controls
- Microphone Delay, Repeat, Echo, Low, High Volume Controls
- Microphone Volume Controls for Low, Mid, High, Echo, Balance, Volume
- 3 Front & 2 Rear 1/4" Microphone Inputs
- Master Microphone, Echo & Volume Controls
- 4 Audio Outputs (Record Out, Line Out, Subwoofer Out (Music/ Mixing), Mic Out (High/Low))
- 2 Banana Plug Speaker Connectors
- Built-in BBE Sonic Maximizer for both vocal and music
- 2 SpeakOn Speaker Connectors
- Pre-Input and Pre-Output for External Effort
- 115/230 Voltage for Worldwide Compatible

Specifications

- Integrated USB Audio Solution using C-Media CM106 Audio I/O Controller works for PC and Mac
- Maximum Output: 200W + 200W @ 8Ω Max
- Microphone Input Sensitivity: <20mV
- Music Input Sensitivity: 250mV / 47KΩ / 1kHz
- Microphone Frequency Response: 20Hz - 20 kHz / 3dB
- Music Frequency Response: 20Hz - 20 kHz / 3dB
- Microphone EQ characteristics: Treble: +/- 10dB (10kHz), Bass: +/- 10dB (100Hz)
- Music EQ characteristics: Treble: +/- 10dB (10kHz), Bass: +/- 10dB (100Hz)
- Key Control Range +/- 6 Half Tones
- Speaker Wattage Impedance: 4Ω - 8Ω
- Voltage: AC 115V - 230V Manual Select
- Rackmountable - kit included
- Dimensions: 17"W x 14"W x 6.5"H
- Weight: 33 lbs.
- 1 Year Manufacturer Warranty
- Designed in U.S.A.

INCLUDES

- Remote Control
- USB Cable
- RCA Cable
- USB Driver Disc
- 2 AA Batteries
- Rackmount Kit

KJV-835 Rear Panel

1. AC 115V/ 230V Input Select
2. AC 115V/230V Input
3. Fuse
4. AC Unswitch Output
5. Speakon Output
6. Microphone Output
7. Subwoofer Output
8. Line Output
9. Record Output
10. Effect Loop
11. Audio Inputs
12. Audio Outputs
13. Video Inputs
14. Video Outputs
15. #4, #5 Mic Inputs
16. USB to PC Inputs
17. Component Outputs
18. Component Inputs



AM-898

600-Watt Professional DSP Mixing Amplifier with Feedback Eliminator, Vocal Elimination, Signal Normalizer, Digital EQ, Echo & Reverb



- 600 Watts Maximum Power Output
- Feedback Eliminator
- Vocal Eliminator
- Auto Level/ Balancing for Music and Vocal
- Digital Effect Processor
- 3-Band Music and 5-Band Microphone Equalizer
- Microphone Noise Gate
- 5 Microphone Inputs (3 front, 2 rear)
- RS-232 Serial Port PC Interface
- User Lock-Down Mode
- Subwoofer Signal Control
- Music and Microphone Balance
- Auto-Source Detection
- 5 Preset Memory Recall Buttons
- 4 Audio & Video Input Selections
- Microphone Volume, Music Volume and Effect Volume Control
- 11-Step Digital Key Control
- 5 Preset Memory Settings to Store Your Favorite Audio/ Effect Settings
- Subwoofer Reducer/ LPF
- Stereo Sound Balancing for Irregular Rooms
- Center Speaker Settings with Volume Control: Mic Only, Music Only, Mic + Music, or Auto Switch

Specifications

- 300 + 300 Watts Maximum Power Output @ 8Ω
- Supports Digital S/ PDIF Input (PCM 44.1KHz, 48KHz)
- 4 RCA A/V Inputs and 2 RCA A/V Outputs
- Dimensions: 17"W x 12.75"H x 5.75"D
- Weight: 28.3 lbs.
- 1 Year Manufacturer Warranty

INCLUDES

- Remote Control
- Power Cord

AM-898 Rear Panel

1. Four A/V Inputs
2. Two A/V Outputs
3. Center Output
4. Remote Extension
5. SPDIF Digital Audio Input
6. Banana Audio Outputs
7. Subwoofer Output
8. Two Microphone Inputs
9. RS232 to PC Connecting Port



AM-825

Professional 600-Watt Mixing Amplifier
with USB & BBE Sonic Maximizer



- PC to USB Interface for pure-digital simultaneous Playback & Recording (Windows XP, Vista & 7)
- 2 Component Video Inputs and 1 Component Video Output for HD Video Signal
- Built-in BBE Sonic Maximizer for both vocal and music
- True Vocal Cancellation Function to remove up to 90% of lead vocal on any audio track
- Temperature-Active, Ultra-Low-Noise Fan for non-stop operation
- 4 Sets of Audio Outputs + USB to PC Recording Output
- Total 4 Audio/Video Inputs: DVD/BGM/USB/AUX
- 2 Component Video Inputs: DVD/BGM
- 1 Component Video Output
- 1 RCA Audio/Video Output
- PC Video Input: RCA/S-Video
- Auto Input Selector
- L/R/Multiplex Channel Output
- Music Low, Mid, High, Balance, Volume Controls
- Microphone Delay, Repeat, Echo, Low, High Volume Controls
- Microphone Volume Controls for 3 sets of 2 microphones
- 6 Microphone Inputs
- Master Microphone Control
- Master Echo Control
- Master Volume Control
- 4 S-Video Input
- 4 RCA Input
- 2 Component Video Input
- 1 Component Video Output, RCA Output, S-Video
- 4 Audio Outputs
- 2 Banana Plug Speaker Connectors
- 2 SpeakOn Speaker Connectors
- Subwoofer Audio Out

Specifications

- Integrated USB Audio Solution using C-Media CM106 Audio I/O Controller
- Maximum Output: 300W + 300W @ 8Ω Max
- RMS Output: 200W + 200W @ 4Ω RMS
- Microphone Input Sensitivity: <20mV
- Music Input Sensitivity: 250mV / 47K Ω / 1kHz
- Microphone Frequency Response: 20Hz - 20 kHz / 3dB
- Music Frequency Response: 20Hz - 20 kHz / 3dB
- Microphone EQ characteristics: Treble: ±10dB (10kHz), Bass: ±10dB (100Hz)
- Music EQ characteristics: Treble: ±10dB (10kHz), Bass: ±10dB (100Hz)
- ± 6-Step Key Control
- Speaker Wattage Impedance: 4Ω - 8Ω
- Voltage: AC 115V - 230V Manual Select
- Dimensions: 17"L x 14"W x 6.5"H
- Weight: 33 lbs.
- 1 Year Manufacturer Warranty

INCLUDES

- Remote Control
- USB Cable
- USB Driver Disc
- Rackmount Kit

AM-825 Rear Panel

1. Voltage Selector
2. AC 115V/230V Input
3. Fuse
4. AC Unswitch Output
5. Speakon Output
6. Microphone Output
7. Subwoofer Output
8. Line Output
9. Record Output
10. Effector Loop
11. Audio Inputs
12. Audio Outputs
13. Video Inputs
14. Video Outputs
15. S-Video Input
16. PC Video Input
17. USB Port
18. Component Outputs
19. Component Inputs



AM-170

250-Watt Mixing Amplifier with 3D Sound Enhancer



- 250-Watt Maximum Power Output @4Ω
- 4 Audio & Video Input Selections
- 3 Front & 2 Rear Microphone Inputs
- 12- Step Digital Key Control
- 3D Dynamic Sound Enhancement for Rich Sound Quality
- Master Music Volume Control
- Master Microphone Volume Control
- Individual Microphone Volume Controls
- Microphone Echo Volume, Repeat & Delay Control
- Microphone Bass, Mid-Range & Treble Adjustments
- Music Bass, Mid-Range & Treble Adjustments
- Multiplex Function
- Full Function Remote Control

Specifications

- Maximum Output: 80W + 80W @8Ω Max
- RMS Output (continuous): 125W + 125W @4Ω RMS
- Microphone Input Sensitivity: <20mV
- Music Input Sensitivity: 300mV
- Microphone Frequency Response: 20Hz - 20KHz/ 3dB
- Music Frequency Response: 20Hz - 20KHz/ 3dB
- Microphone EQ: Treble: +/- 5dB (10KHz), Bass: +/- 5dB (100KHz)
- Music EQ: Treble: +/- 5dB (10KHz), Bass: +/- 5dB (100KHz)
- Speaker Wattage Impedance: 4Ω - 8Ω
- Supply Voltage: AC 110V - 120V or AC 220V - 240V
- Dimensions: 16"L x 13"W x 5.75"H
- Weight: 17 lbs
- 1 Year Manufacturer Warranty

INCLUDES

- Remote Control
- Power Cord



AM-170 Rear Panel

1. Effector Loop
2. Record Output
3. Line Output
4. Speaker Connectors
5. Voltage Selector
6. S-Video Output
7. S-Video Inputs
8. Audio Output
9. Video Output
10. Mic Inputs
11. Video Inputs
12. Audio Inputs

AM-600

Professional 600-Watt Dual Channel Amplifier



- Professional 600-Watt Karaoke Amplifier
- Unbalanced RCA Input
- Balanced XLR Input
- Balanced 1/4" Cable Input
- Fan Cooled

Specifications

- Maximum Output: 300W + 300W @8Ω Max
- Two Channel Balanced/Unbalanced Inputs
- Individual Channel Volume Control
- Heavy-Duty Design/Rackmountable
- Dimensions: 17"L x 13"W x 3.75"H
- Weight: 24 lbs
- 1 Year Manufacturer Warranty

INCLUDES

- Power Cord

AM-600 Rear Panel

1. RCA Input
2. XLR Audio Output
3. Two 1/4" Inputs
4. Banana Audio Outputs



AM-145

80-Watt Mixing Amplifier with 4 AV Inputs



Front AUX Inputs

- 80-Watt maximum power output
- Four A/V inputs selector
- Microphone volume control
- Microphone bass and treble control
- Microphone echo and delay control
- Music bass and music treble control
- Music balance control
- Two 1/4" microphone inputs
- Music effect bypass switch
- Dynamic sound enhancer

Specifications

- Maximum Output: 40W + 40W @ 8Ω
- 4 A/V inputs
- RCA line and sub outputs
- 115V-230V power input selector for worldwide compatibility
- Power AC 115-230V 50/60Hz input
- Dimensions: 17"W x 12"W x 5.75"H
- Weight: 16 lbs
- 1 Year Manufacturer Warranty

INCLUDES

- Remote Control
- 2 AA A Batteries
- RCA Cable
- Power Cord



AM-140 Rear Panel

1. Three A/V Inputs
2. One A/V Output
3. Line Audio Output
4. Line Sub Audio Output
5. Banana Audio Outputs
6. AC 115V/ 230V Input Select



AM-600

Professional 600-Watt Dual Channel Amplifier



- Professional 600-Watt Karaoke Amplifier
- Unbalanced RCA Input
- Balanced XLR Input
- Balanced 1/4" Cable Input
- Fan Cooled

Specifications

- Maximum Output: 300W + 300W @8Ω Max
- Two Channel Balanced/Unbalanced Inputs
- Individual Channel Volume Control
- Heavy-Duty Design/Rackmountable
- Dimensions: 17"L x 13"W x 3.75"H
- Weight: 24 lbs
- 1 Year Manufacturer Warranty

INCLUDES

- Power Cord

AM-600 Rear Panel

1. RCA Input
2. XLR Audio Output
3. Two 1/4" Inputs
4. Banana Audio Outputs



AM-145

80-Watt Mixing Amplifier with 4 AV Inputs



Front AUX Inputs

- 80-Watt maximum power output
- Four A/V inputs selector
- Microphone volume control
- Microphone bass and treble control
- Music bass and music treble control
- Music balance control
- Two 1/4" microphone inputs
- Music effect bypass switch
- Dynamic sound enhancer

Specifications

- Maximum Output: 40W + 40W @ 8Ω
- 4 A/V inputs
- RCA line and sub outputs
- 115V-230V power input selector for worldwide compatibility
- Power AC 115-230V 50/60Hz input
- Dimensions: 17"W x 12"W x 5.75"H
- Weight: 16 lbs
- 1 Year Manufacturer Warranty

INCLUDES

- Remote Control
- 2 AA A Batteries
- RCA Cable
- Power Cord

VALUE LINE
PERFORMANCE & AFFORDABILITY

AM-145 Rear Panel

1. Three A/V Inputs
2. One A/V Output
3. Line Audio Output
4. Line Sub Audio Output
5. Banana Audio Outputs
6. AC 115V/ 230V Input Select



EXPERIENCE WIRELESS FREEDOM



UHF-A6

Commercial UHF True Diversity
Wireless Microphone System



INFRARED (IR) SYNCING FEATURE

- UHF True Diversity - 2 radio modules per antenna are continuously compared to select the strongest signal delivering an exceptionally stable radio signal.
- Ability to use up to 100 individual channels simultaneously (multiple receivers required)
- Built-in SQ - Allows you to adjust the receivers range. If more than one radio system is used in a single area, adjust your SQ to only go as far as your microphones to avoid picking up unwanted frequencies.
- High Durability - Dent resistant to avoid damage from big drops.
- Channel Assigned Frequencies - It's easier to remember a single number than a frequency number so we created a way to assign an "easier to remember" sequence to each frequency such as 1, 2, 3, etc... versus xxx.xx. This makes assigning different microphones to different rooms a snap.

Specifications

Receiver

- Frequency Stability: +/- 0.005%
- Image Interference Rate: >80dB
- S/N Ratio: >105dB
- Sensitivity: -107dBm
- T.H.D.: <0.5%
- Audio Output Impedance: 600Ω
- Audio Output Level: -12dB
- Display: LCD
- Frequency Range: 645.250-674.95MHz
- Frequency Preparation: PLL
- Receiver Channels: 100 Individual Channels
- Frequency Response: 15Hz-20KHz
- Maximum Distance: 150M

Transmitter (Handheld)

- Dynamic Range: >110dB
- Frequency Stability: +/- 0.005%
- Frequency Deviation: +/- 45KHz
- Spurious Rejection: <48dBc
- RF Output: 10mW
- Power Consumption: 90mA
- Battery: AA 1.2V/1.5V x 2
- Display: LCD

INCLUDES

- 2 Wireless Mics (Black)
- UHF-A6 Receiver
- 2 Antennas
- Power Cord
- Microphone Cable
- Rackmount Kit



Body Pack
Includes a headset
and lavalier for more
convenience

OPTIONAL ACCESSORIES

Charging Station
Charges up to
20 microphones
at the same time.



Additional
UHF Wireless Microphones
with 3 fantastic finishes
to choose from.
Silver, White, and Black



UHF-2980

Dual Rechargeable 100-Channel UHF Microphone System



INFRARED (IR) SYNCING FEATURE



- Switchable, 50 Channels per Microphone (100 Total Channels)
- Microphone and Receiver Channels Auto-Sync via Infrared
- Two High Sensitive Microphones with LCD Indicators
- Noise Reduce Technology
- Uni-Directional Rechargeable Battery Design
- Dual Channel LCD Display
- Rackmountable (2 machines are needed to fit rack-mount)

Specifications

Receiver

- Frequency Band: UHF
- Receiver: Dual Channel PCB Module
- Frequency Range: 610-700 MHz
- Frequency Stability: PLL
- F/N Ratio: 80dB
- P/N Ratio: 80dB
- Audio Output: 1/4", 3-pin XLR
- Antenna: 2TNC PLUG Ω

Transmitter (Handheld)

- Frequency Range: 760-860 MHz
- Frequency Stability: PLL
- Modulation Mode: FM
- Adjustment Depth: 35 KHz (Max)
- Transmitting Power: ≤ 10dBm RF
- Battery: 1.5V* AA x 2 per mic

INCLUDES

- UHF-2980 Receiver
- 1/4" Microphone Cable
- 2 Antennas
- Charging Base
- 2 Power Cables
- Rackmount Kit
- 2 AA Rechargeable Batteries

VHF-8012

Dual Rechargeable Wireless Microphone System

- VHF Band Quartz Lock for Drift-Free Operation
- 2 Wireless Handheld Microphones with Enhanced Muting and Noise Reduction Technology
- Signal Status Display
- Individual Volume Control for Precise Vocal Balancing
- Rack-mountable (Kit included)

Specifications

Receiver

- Receive Mode: Crystal Frequency Lock
- Frequency Range: VHF Band (180-250 MHz) Quartz Lock for Drift free operation
- Frequency Stability: 15 PPM
- Sensitivity: 3uV 30dB S/N
- Signal to Noise Ratio: 60dB
- Audio Output: 0 - 0.5V/4.7K
- Output Connectors:
- 2 XLR Unbalanced & 1/4" Balanced
- Power: AC 90/240 (10%)
- Dimensions: 13.75"L x 8.5"D x 2"H
- Weight: 3.3 lbs

Transmitter (Handheld)

- Frequency Range: VHF Band (180-250 MHz) Quartz Lock for Drift free operation
- Frequency Stability: 15 PPM
- Modulation Mode: FM
- Modulation Depth: 10 KHz
- Emission Power: 30 mV max
- Harmonic Suppression: 40dB
- Battery: AA
- Antenna: Built in
- Battery current: 25-30mA



INCLUDES

- 2 Wireless Mics
- Rackmount Kit
- VHF-8012 Receiver
- Power Cable
- Microphone Cable
- 4 AA Rechargeable Batteries



Acesonic

The Leader In Professional Sing-Along Equipment

HM-100

Professional Legendary
Vocal Microphone



- Heavy-duty design and materials that can handle heavy usage
- Dent resistant microphone head
- Strong, solid, and super flexible 1/4" connector - No need to connect or disconnect from the microphone, minimizes connector breakage or damage
- 16 ft ultra-durable, commercial grade microphone cable

Specifications

- Microphone Type: Moving Dynamic Coil
- Polar Pattern: Uni-Directional
- Frequency Response: 50Hz - 15KHz
- Impedance: 600Ω ±30% @ 1KHz
- Sensitivity (0dB=1v/pa@1KHz): -49.4 ±3dB

INCLUDES

- 1 Anti-Roll Mic Ring



PX-88

PerformMax Professional
Dynamic Vocal Microphone

- On/Off Switch
- Frequency response tailored for vocals with brightened midrange and bass rolloff
- Uniform cardioid pickup pattern isolates the main sound source and minimizes background noise
- Pneumatic shock-mount system cuts down handling noise
- Effective, built-in spherical wind and pop filter

Specifications

- Type: Dynamic (moving coil)
- Frequency Response: 50-14,000 Hz
- Polar Pattern: Unidirectional (cardioid)
- Impedance: 150 (300 actual)
- Connector: 3-pin professional audio connector (male XLR type)

INCLUDES

- 14 ft Microphone Cable (XLR-to-1/4")
- 1/4" to Mini Jack Adaptor



HM-708

Professional Microphone
with Volume Controller

- On/Off Switch
- 3 Level Volume Controller
- Cardioids polar pattern picks up the most sound from the front of the microphone and some sound from the sides.
- Steel mesh ball grill with integral "pop" filter reduces explosive breath sounds and wind noise

Specifications

- Sensitivity - 72.5 dB
- Frequency Response: 50Hz - 16KHz
- Impedance: 600Ω
- Lifetime Manufacturer Warranty

INCLUDES

- 15 ft Microphone Cable (XLR-to-1/4")
- Deluxe Microphone Carrying Case



MP-703

Professional Legendary
Vocal Microphone

Specifications

- Type: Hyper - Cardioid
- Frequency Response: 60Hz - 13,000 Hz
- Impedance: 400Ω
- Sensitivity : -74dB +/- 3dB
- Sound Pressure Level : More than 130 dB(SPL)
- Color: Metallic Gray

INCLUDES

- 14 ft Microphone Cable (XLR-to-1/4")

PK-2000

160-Watt Professional Portable
Blu-ray Disc™ Karaoke System
with Built-in Dual VHF Microphones



- 160-Watt maximum output amplifier & stereo speakers with two 3" tweeters & two 6.5" mid-range drivers.
- Supports: Blu-ray Disc™, BD-ROM, BD-R, BD-RE, BD-R DL, BD-RE DL, DVD, DVD±R, DVD±RW, CD-DA, CD-R, CD-RW, VCD, CD+G, Audio CD and data discs.
- Compatible with: MP3, MP3G, WAV, WMA, MPEG-1, MPEG-2 (MPG/VOB), MPEG-4(AVI), DivX, XviD, RMVB, DAT, iSO, M2TS, MKV, MOV and JPEG files
- CD+G to MP3G Converter
- Vocal mixer
- Digitally record your performance & live sound!
- Play all your media from discs or USB drives in HD quality up to 1080p.
- Built-in dual VHF wireless microphones.
- Four 1/4" microphone inputs.
- 7-Band EQ
- 1 HDMI output.
- 1 component video output.
- 1 headphone output.
- External speaker output terminals.
- Handles and wheels for easy storage and transportation.
- Mounting hole for stand.

Specifications

- Power Output: 40W + 40W RMS
- Total Harmonic Distortion: 0.5%
- Input Impedance: 47K
- Input Sensitivity: 25mV
- Max Input Signal: 2.5Vp-p
- Signal-to-Noise: 80dB
- Music EQ: 60Hz/200Hz /400Hz/1KHz/3KHz/6KHz/16KHz
- Frequency Response: 20Hz-20KHz
- Mic Treble Adjustment: ± 10dB
- Mic Bass Adjustment: ± 10dB
- Mic Input Sensitivity: 20mV
- Echo Delay: 200ms
- Dimensions: 18.5" x 14" x 20.5"
- Weight: 45.8 lbs

INCLUDES

- 2 Wireless Mics
- Power Cable
- Remote Control

PK-1290 Roadwiz®

80-Watt Portable Multi-Format
Sound System with Digital Recording



- 80-Watt RMS Amplifier & stereo speakers with two 3" tweeters & two 6.5" mid-range drivers.
- CD+G to MP3G Converter
- Vocal mixer
- Digitally record your performance & live sound!
- Supports: CD, CD+G, VCD, DVD, MP3G, MP3, CD-R/CD-RW, DVD-R/DVD+R.
- 7-Band EQ
- Two 1/4" microphone inputs
- Two XLR microphone inputs
- Guitar input
- Keyboard input
- 3 Aux RCA inputs
- 1 Aux RCA output
- Surround Sound Audio output for multi-format player
- 1 S-Video output
- 1 component video output
- 1 optical audio output
- 1 headphone output
- External speaker output terminals
- Built-in wheels & handle bars for easy transportation.
- Cooling fan built-in

Specifications

- Power Output: 40W + 40W RMS
- Total Harmonic Distortion: 0.5%
- Input Impedance: 47K
- Input Sensitivity: 25mV
- Max Input Signal: 2.5Vp-p
- Signal-to-Noise: 80dB
- Music EQ: 60Hz/200Hz /400Hz/1KHz/3KHz/6KHz/16KHz
- Frequency Response: 20Hz - 20KHz
- Mic Treble Adjustment: ± 10dB
- Mic Bass Adjustment: ± 10dB
- Mic Input Sensitivity: 20mV
- Echo Delay: 200ms
- Dimensions: 18.5" x 12" x 24"
- Weight: 50 lbs

ACCESSORIES



Acesonic®

The Leader In Professional Sing-Along Equipment



LCD-1
TV/Monitor Stand

- 4 steps adjustable height (3ft - 4.2ft)
- 5 wheels for easy maneuvering
- Able to rotate 360° & tilt 180°
- Able to mount up to 20" LCD monitors
- Fits VESA 75mm/100mm TV mounts
- Lightweight (12lbs)

*TV not included



TH-888
iPad® Stand & Hand Holder

iPad® not included



TH-988
Android® Tablet Stand & Hand Holder

Android® Tablet not included



32-In-One USB 2.0
Memory Card Reader

- Supports USB 2.0 up to 480Mbps/sec data transfer rate
- Support SDHC up to 32GB SD Card



MicroSD Cards w/ Adapter & Power CD+G Player Pro for Windows

- Class 4 - Minimum sustained data transfer speed of 4MB/sec
- Includes Power CD+G Player Pro for Windows

Comes in 4, 8 & 16GB



TAMBOURINE

Add a little more fun while you're having karaoke night!
*comes in assorted colors



MIC WIND SOCKS

- Eliminates unnecessary pop and wind through microphones
- Two wind screens in each pack
- Fits most wired or wireless vocal microphones
- Sterilized



CA-306
6 ft 3 RCA to 3 RCA Gold Plated A/V Cable

CA-312
12 ft 3 RCA-to-RCA Gold Plated A/V Cable

9V Battery Chargers
9V
AA

HDMI™
SWITCHES & CONVERTERS

HDV-814
1:4 Splitter

- Max Single Link Range up to 1920 x 1080p/60
- Support HDMI 1.3
- EIDI Duration 4 seconds



HDV-818
1:8 Splitter

- Max Single Link Range up to 1920 x 1080p/60
- Support HDMI 1.3
- EIDI Duration 4 seconds



HE-50
15 ft - 18 AWG Speaker Cable with Dual Banana Connector HDMI: 1 CAT5E/CAT 6 Extender with Dual HDMI Input to Single Output (Switchable)

- 2 HDMI Inputs/1 HDMI Output Selector switch to toggle between two sources



R45
HDMI Repeater (40M)

- Extends 1080p/UXGA up to 40 meter transmission distance
- No Power, Plug and play, easy to install



HDV-332
All-to-HDMI Converter

- 1x CVBS, 1xYPbPr, 1xVGA, 2x HDMI and 2x USB inputs
- USB movie, picture and music playback
- 720p and 1080p high definition HDMI output



4 x 2 HDMI Matrix Switch

- 4 HDMI inputs
- 2 HDMI Outputs
- RCA Stereo (Left + Right) Audio Outputs
- Output Selector switch on front panel
- LED Indicator lights for both outputs



SW301-M
3-Way HDMI Switch

- Supports up to 1080p
- HDMI1.3b Compatible
- Support 25MHz-165MHz
- No loss of audio or video quality
- Select Channels with remote control



HDV-312
HDMI Splitter 1:2

- Max Single Link Range up to 1920 X 1080p/60
- Support HDMI 1.3
- EIDI Duration 4 seconds
- Operating Frequency up to 225MHz



M612
HDMI-to-HDMI + Audio Converter

- HDMI input to HDMI Output plus 3.5mm (headphone) audio output
- No need to install drivers, portable, flexible, plug and play
- Low power, No power adaptor



M615
MINI AV-to-HDMI Converter

- No need to install drivers, portable, flexible, plug and play
- Provide advanced signal processing with great precision, colors, resolutions and details



M330
MINI VGA-To-HDMI Converter

- Converts analog PC (RGBHV) and audio signal to digital HDMI format.
- Connect the analog HD-15 VGA output from PC to the digital HDMI input of the latest HD ready plasma, LCD or DLP TV.



HDV-10
HDMI-To-CVBS+L/R CONVERT

- Hardware conversion, plug and play without any software driver
- Compatible HDMI1.3
- Support NTSC and PAL two standard TV formats
- One HDMI input, one AV output, one stereo output



HDV-10II
HDMI-To-HDMI+CVBS+L/R

- Convert the HDMI signal to PAL/NTSC Video signal output by video precessing.
- Bypass output the HDMI high definition signal losslessly.
- Identificat HDCP automatically, to get rid of the HDCP KEY.



SW501-M
5-Way HDMI Switch

- 5x1 HDMI Switch
- Support Up To 1080p
- HDMI 1.3b compatible
- Supports 25MHz-165MHz

