

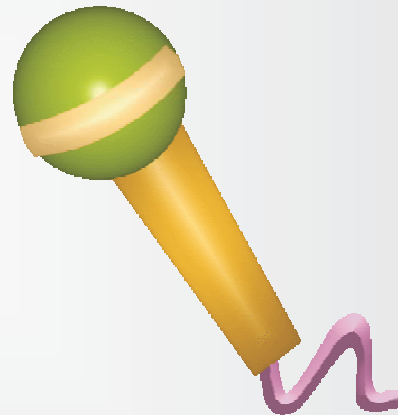
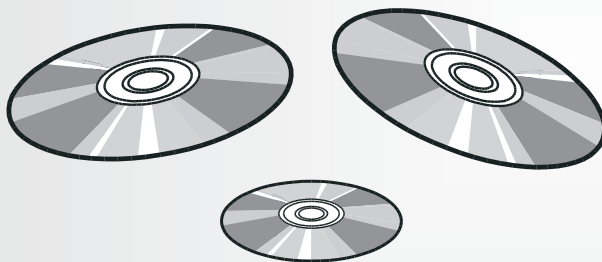
Acesonic



Karaoke Mixer

USER'S MANUAL

KM-111



CAUTION:

To assure this player will work at its best, please read this user's manual carefully before operation and keep for future reference.

www.acesonic.com

Warnings, Cautions and Others

Mises en garde, precautions et indications diverses

FCC INFORMATION (U.S.A.)

1. This equipment has been tested and found to comply with the limits for a Class B digital device, pursuant to part 15 of the FCC Rules. These limits are designed to provide reasonable protection against harmful interference in a residential installation.

This equipment generates, uses and can radiate radio frequency energy and, if not installed and used in accordance with the instructions, may cause harmful interference to radio communications. However, there is no guarantee that interference will not occur in a particular installation. If this equipment does cause harmful interference to radio or television reception, which can be determined by turning the equipment off and on, the user is encouraged to try to correct the interference by one or more of the following measures:

Connect the equipment into an outlet on a circuit different from that to which the receiver is connected. Consult the dealer or an experienced radio/TV technician for help.

2. **IMPORTANT:** When connecting this product to accessories and/or another product use only high quality shielded cables. Cable(s) supplied with this product **MUST** be used. Follow all installation instructions. Failure to follow instructions could void your FCC authorization to use product in the U. S. A.

For Canada/Pour le Canada

CAUTION: TO PREVENT ELECTRIC SHOCK, MATCH WIDE BLADE OF PLUG TO WIDE SLOT, AND FULLY INSERT.

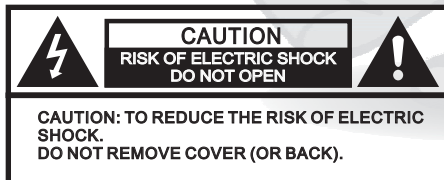
ATTENTION: POUR EVITER LES CHOCS ELECTRIQUES, INTRODUIRE LA LAME LA PLUS LARGE DE LA FICHE DANS LA BORNE CORRESPONDANTE DE LA PRISE ET POUSSER JUSQU'AU FOND.

For Canada/Pour le Canada

THIS DIGITAL APPARATUS DOES NOT EXCEED THE CLASS B LIMITS FOR RADIO NOISE EMISSIONS FORM DIGITAL APPARATUS AS SET OUT IN THE INTERFERENCE-CAUSING EQUIPMENT STANDARD ENTITLED DIGITAL APPARATUS, ICES-003 OF THE DEPARTMENT OF COMMUNICATIONS. CET APPAREIL NUMERIQUE RESPECTE LES LIMITES DE BRUITS RADIO ELECTRIQUES APPLICABLES AUX APPAREILS NUMERIQUE DE CLASSE B PRESCRITES DANS LA NORMESUR LE MATERIEL BROUILLEUR: APPAREILS NUMERIQUE , NMB-003 EDICTEE PAR LE MINISTRE DES COMMUNICATIONS.

Caution

Disconnect the electrical plug to shut off power completely. The POWER on the unit is not off from the electrical plug when the POWER button on the front panel is not pressed in.



The lightning flash with arrowhead symbol, within an equilateral triangle is intended to alert the user to the presence of uninsulated dangerous voltage within the product's enclosure that may be of sufficient magnitude to constitute a risk of electric shock to persons.




The exclamation point within an equilateral triangle is intended to alert the user to the presence of important operating and maintenance (servicing) instructions in the literature accompanying the appliance.

CAUTION

To reduce the risk of electrical shocks, fire, etc:

1. Do not remove screws, covers or cabinet.
2. Do not expose this appliance to rain or moisture.

Important Safety Instructions

1. **Read These Instructions.**
2. **Keep These Instructions.**
3. **Heed All Warnings.**
4. **Follow All Instructions.**
5. **Do not use this product near water.**
6. **Clean** only with dry cloth.
7. **Do not block any ventilation openings.**
8. **Do not install near any heat sources** such as radiators, heat register, stoves, or other apparatus (including amplifiers) that produce heat.
9. **Do not defeat the safety purpose of the polarized or grounding-type plug.** A polarized plug has two blades with one wider than the other. A grounding type plug has two blades and third grounding prong. The wide blade or the third prong are provided for your safety. If the provided plug does not fit into your outlet, consult an electrician for replacement of the obsolete outlet.
10. **Protect the power cord from being walked on or pinched** particularly at plugs, convenience receptacles, and the point where they exit from the apparatus.
11. **Only use attachments and accessories specified by the manufacturer.**
12. **Use only with the cart, stand, tripod, bracket, or table specified by the manufacturer, or sold with the apparatus.** When a cart is used, use caution when moving the cart. 
13. **Unplug this apparatus during lightning storms or unused for long period of time.** Apparatus combination to avoid injury from tip-cover.
14. **Refer all servicing to qualified service personnel.** Servicing is required when the apparatus has been damaged in any way, such as power-supply cord or plug is damaged, liquid has been spilled or objects have fallen into the apparatus, the apparatus has been exposed to rain or moisture, does not operate normally, or has been dropped.
15. **This product should be operated only from the type of power source indicated on the marking label.** If you are not sure of the type of power supply to your home, consult your product dealer or local power company. For products intended to operate from battery power, or other sources, refer to the operating instructions.
16. **Protective Attachment Plug**
The product is equipped with an attachment plug having overload protection. This is a safety feature. See Instruction Manual for replacement or resetting of protective device. If replacement of the plug is required, be sure the service technician has used a replacement plug specified by the manufacturer that has the same overload protection as the original plug.
17. **Power Lines**
An outside antenna system should not be located in the vicinity of overhead power lines or other electric light or power circuits, or where it can fall into such power lines or circuits. When installing an outside antenna system, extreme care should be taken to keep from touching such power lines or circuits as contact with them might be fatal.
18. **Overloading**
Do not overload wall outlets, extension cords, or integral convenience receptacles as this can result in a risk of fire or electric shock.
19. **Object and Liquid Entry**
Never push objects of any kind into this product through openings as they may touch dangerous voltage points or short-out parts that could result in a fire or electric shock. Never spill liquid of any kind on the product.
20. **Replacement Parts**
When replacement parts are required, be sure the service technician has used replacement parts specified by the manufacturer or have the same characteristics as the original part. Unauthorized substitutions may result in fire, electric shock, or other hazards.
21. **Safety Check**
Upon completion of any service or repairs to this product, ask the service technician to perform safety checks to determine that the product is in proper operating condition.
22. **Wall or Ceiling Mounting**
The product should be mounted to a wall or ceiling only as recommended by the manufacturer. Any mounting of the product should follow the manufacturer instructions, and should use a mounting accessory recommended by the manufacturer.
23. **Wet location marking**
Apparatus shall not be exposed to dripping or splashing and no objects filled with liquids, such as vases, shall be placed on the apparatus.
24. **Servicing**
If your product is not operating correctly or exhibits a marked change in performance and you are unable to restore normal operation by following the detailed procedure in its operating instructions, do not attempt to service it yourself as operating instructions, do not attempt to service it yourself as opening or removing covers may expose you to dangerous voltage or other hazards. Refer all servicing to qualified service personal.

Acesonic KM-111 Karaoke Mixer

Table of Contents

1.Features -----	Page 2
2.Front Panel View -----	Page 3
3.Rear Panel View -----	Page 4
4.Setup-----	Page 5

Package Includes:

1. Wired Microphone
2. User 's Manual
3. RCA Cable
4. USB-Cable
5. Mini-Jack to RCA Cable
6. Warranty Card

Precautions

Notes on Power Cord

- *When you are away on travel or otherwise for an extended period of time, unplug the unit from the wall outlet.
- *When unplugging the mixer from the wall outlet, always pull the plug, not the cord. *Do NOT handle the power cord with wet hands.

Avoid Moisture, Water and Dust

- *Do not place the mixer in a moist environment or in an area where there might be an excessive amount of dust build up (e.g. near a fan).
- *If water or any liquid should get into the unit, turn off the power and unplug the unit from the wall outlet immediately. Consult your dealer or an authorized repair station. Using the unit in this state may lead to fire or electrical shock.

Avoid High Temperatures

- *Do not expose the mixer to direct sunlight or near any heating device.

Notes on Installation

- *Select a place where the unit will be level, dry, and not too cold or hot.
- *Do not use unit on its side or where subject to vibrations (e.g. speakers).
- *Leave sufficient distance between the TV and unit.
- * Do not leave heavy objects on top of unit.

Prevent Malfunction of Unit

- *No parts in this unit are user-serviceable. If the unit no longer functions, unplug the unit from the wall outlet and contact your dealer for service options.
- *Never block the vents on the unit. Vents are used to circulate air and keep the temperature of the player down. Blocking the vents may result in damage of the unit.

FEATURES

1. Transform any DVD/MP3 player or PC into a karaoke machine

This mixer adds vocal to any music source for karaoke entertainment. Use USB cable to connect to your PC to become a karaoke/media center.

2. Two 1/4" microphone inputs

Have up to 2 singers at once from the regular 1/4" microphone style plugs on the front panel.

3. Two XLR microphone inputs on rear

You can use two XLR inputs to plug in microphones, guitars etc...

4. 3D Sound Processor

Advance digital sound enhancement technology improves a full range of audio frequencies to fine tune the sound of your musical output. Enable users to enjoy a more natural and comfortable sound.

5. Microphone Treble Control

You can adjust the level of HIGH-Frequency allowed to the microphone channels.

6. Microphone Bass Control

You can adjust the level of LOW-Frequency allowed to the microphone channels.

7. Microphone Echo Control

You can adjust the digital ECHO effect applied to the microphone channels.

8. Individual microphone volume control

Adjust each microphone volume individually.

9. Multiplex

With Multiplex karaoke media, lead vocals and music are recorded in separate left and right stereo channels. You can select channel by Channel Type Selector to enables the cancellation of guide vocals.

10. USB & Audio line in

Thess inputs are for connecting the KM-110 to the sound ouput of a computer, Mp4 player, or DVD player. When you connect to computer via USB port, driver will Audomatically install into your computer. Please restart the computer to activate the driver.

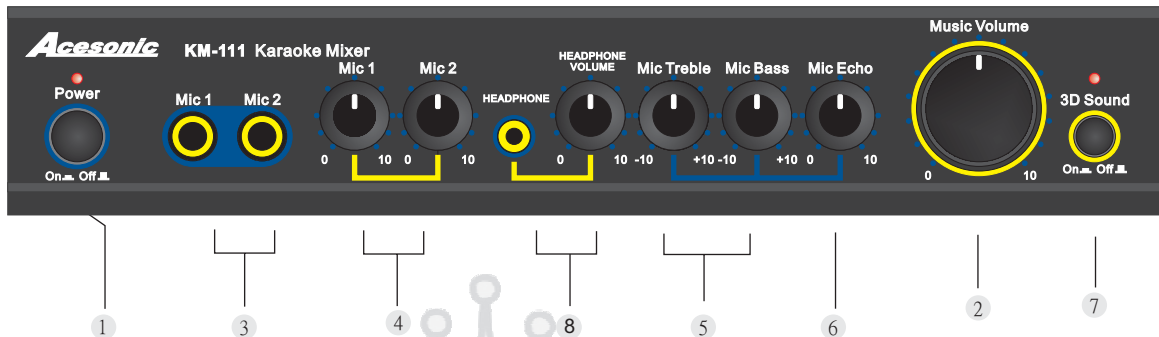
11. One audio line out

This ouput is for connecting the KM-110 to the input of an amplifier, receiver, or TV audio input.

12. MiniJack Audio out

Can use to plug to your headsets or speakers.

Front Panel View



FRONT PANEL CONTROLS:

[1]Power Switch:

Use this to turn the main power on/off.

Note: Always turn off the main power and set all volume controls to zero before making any audio connections.

[2]Music Volume Control:

Use this control to adjust the playback volume of the music.

Note: This control does not adjust the volume of the microphones or effects.

[3]Front Panel Microphone Inputs:

Use these 1/4" jack type microphone input connectors to connect microphones to Mic. Channels 1 and 2.

[4]Individual Microphone Volume Controls:

Use these to set the volume of each microphone in relation to the other microphones.

[5]Microphone Tone Controls:

Use these bass and treble tone controls to adjust the tone of all 2 microphone channels at once.

[6]Echo Volume Control:

Use this to adjust the level of the Echo Effect in relation to the volume of microphones.

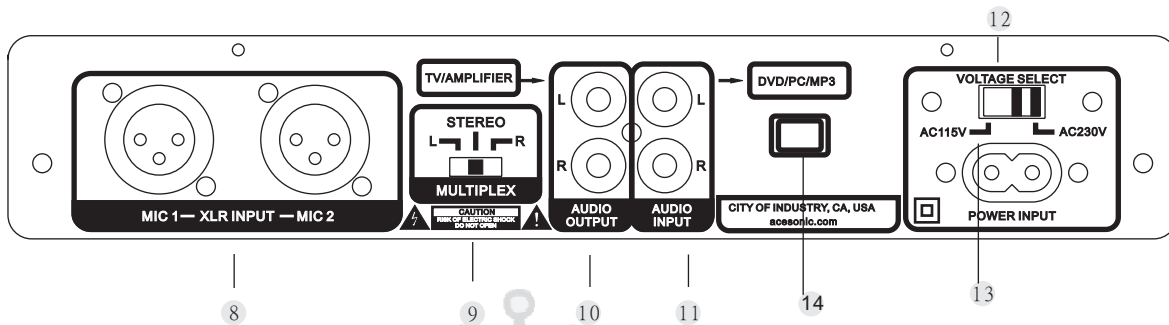
[7]Processor Button:

Use this to turn the 3D sound enhancer on/off

[8]MiniJack Input and Volume Control :

Use MiniJack input to plug your headsets and use Volume Control to adjust the music volume.

Rear Panel View



REAR PANEL CONTROLS:

[8]Mic 1 & 2 Balanced Input:

Connect to a balanced microphone, the output jack of a wireless microphone or an electric guitar with balanced output.

[9]Channel Type Selector(Multiplex):

Choose from left mono channel, right mono channel and stereo output for multiplex CD+G and VCD karaoke. *Default: Stereo

[10]Audio Out:

Connect this RCA type line level output to the input of an amplifier/active speaker system.

[11]Audio Line Input:

Line level audio input using RCA type connectors. This can accept a signal from any line level audio device (eg DVD, CD, MD, PC, MP3/MP4 players, etc).

[12]Power Selector:

Select the power supply voltage for the KM-111 according to the local outlet (115V-230V). *Default: 115V for USA/Canada, 230V for Europe area

[13]Power Cable Input:

Use this main inlet to supply power to the unit.

[14]USB Cable Input:

Use this USB cable to connect KM-111 to your Computer*.

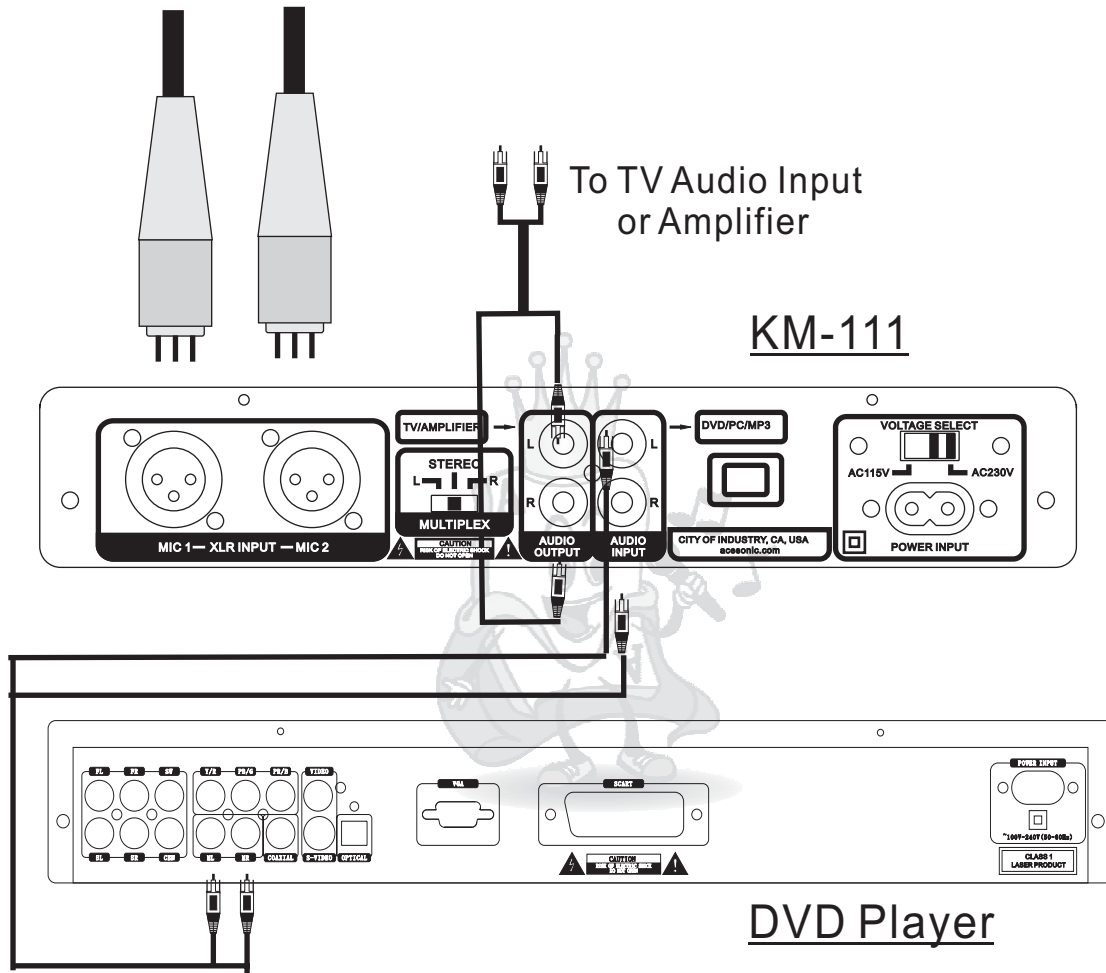
* Please use USB cable comes with KM-111 to your computer first.

The driver of KM-111 will automatically install into your computer.

After installing driver, please restart your computer to activate the driver and use this function.

Setup-Connect DVD player to KM-111

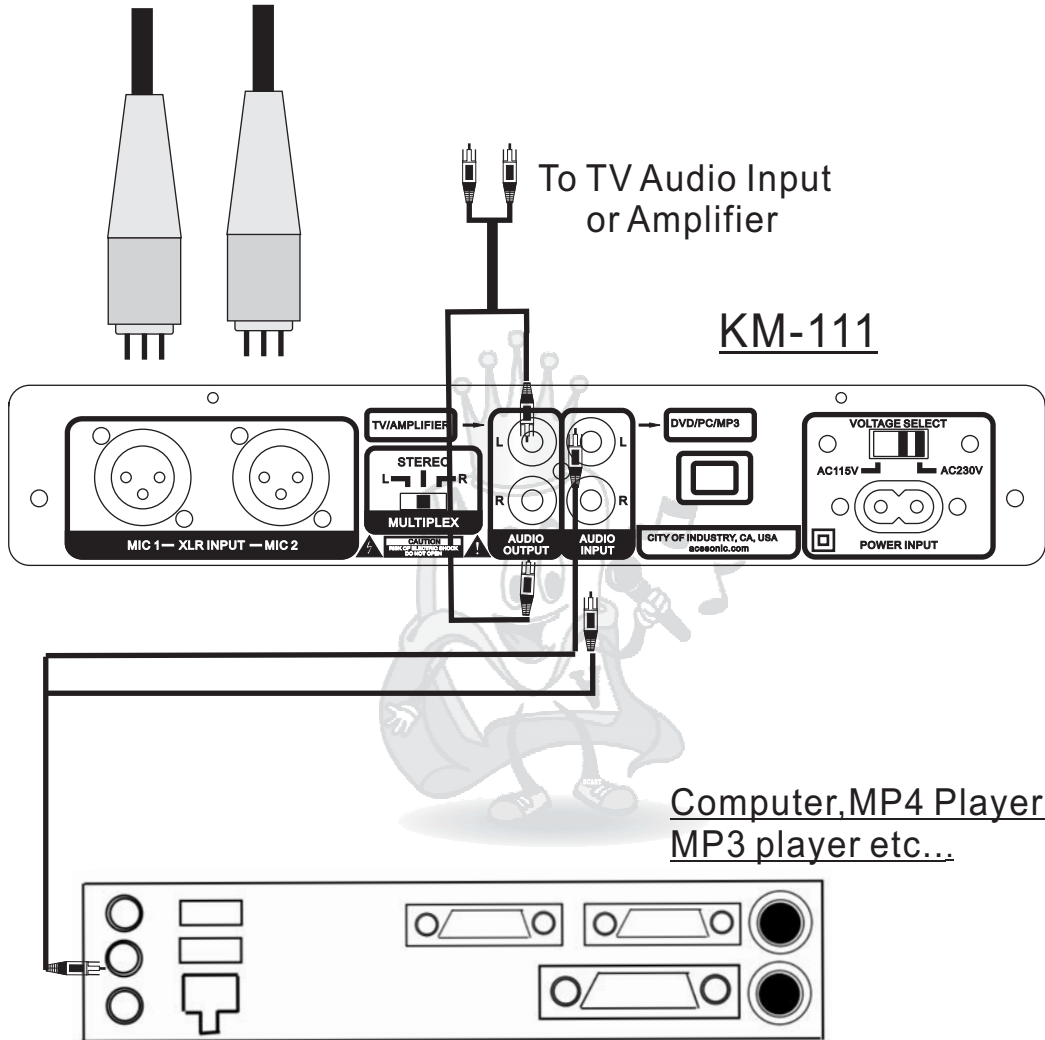
XLR microphone input, guitar input, etc...



Use RCA Cable
(Included)

Setup-Connect computer to KM-111 By using RCA-to-MiniJack Cable

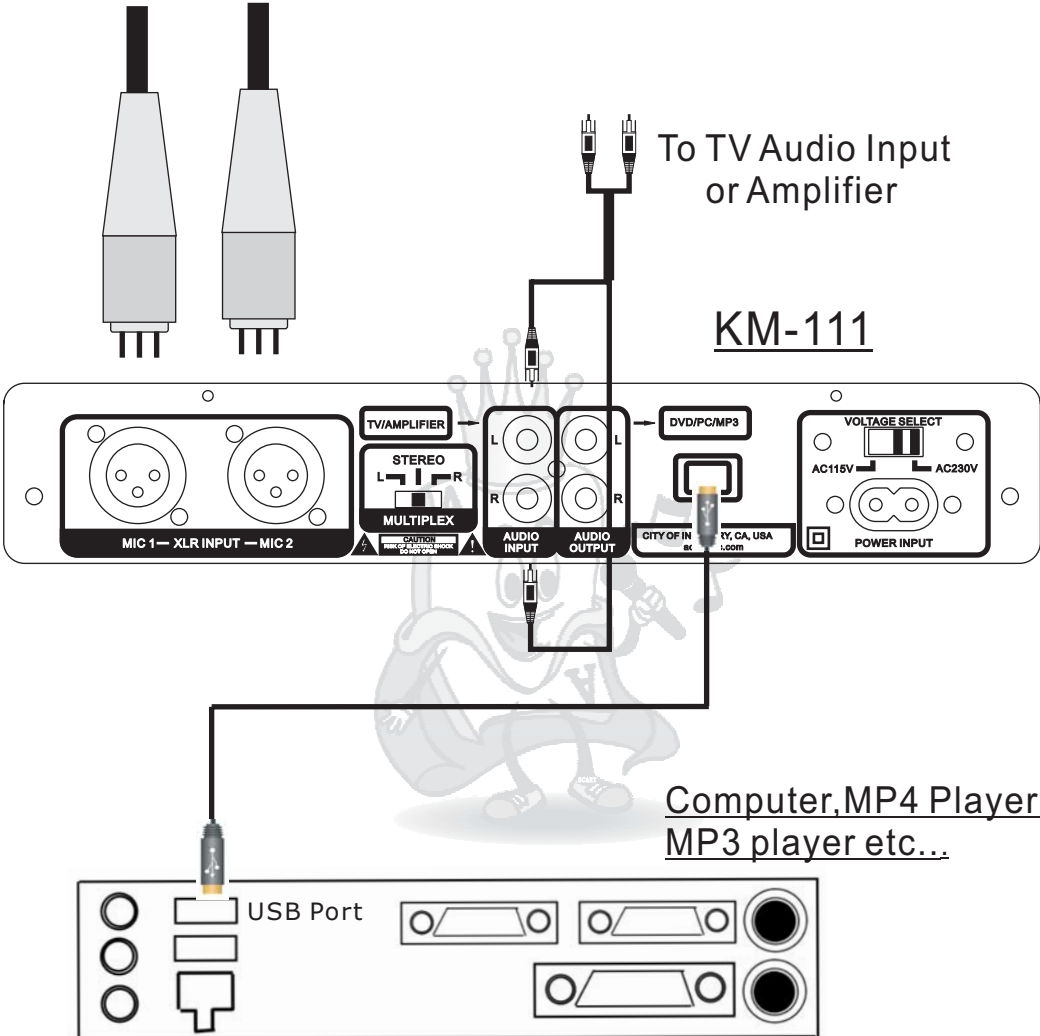
XLR microphone input,guitar input, etc...



Use mini-jack Cable
(Included)

Setup-Connect computer to KM-111 By using USB Cable

XLR microphone input, guitar input, etc...



Use USB Cable
(Included)

*Driver will install automatically when first time connecting to computer. However, you have to restart computer to activate driver



Acesonic

Acesonic Corp. City of Industry CA, U.S.A

Sale:(626)820-0645

Tech. Support:(626)820-0670

www.acesonic.com