

User Manual

NOTE

Your Acesonic KOD-2400 Karaoke-On-Demand arrives with everything you need to start making music and performing except a microphone and speakers. These can be obtained from Acesonic, or you can use any standard audio equipment that conforms to contemporary standards.



Front Panel

Thank you for purchasing Acesonic's KOD-2400 Karaoke-On-Demand Jukebox. Acesonic takes pride in providing its customers with only the most advanced and highest quality products on the market.

With proper care and use you will get many years of satisfying use from your Acesonic product.

Be sure to keep original packaging in case re-shipping is required for returns or repairs.

Care and cleaning: Use a slightly damp cloth to clean the front panel and other surfaces of the KOD-2400.

Do not use the device in areas that are wet or prone to dampness. Always allow sufficient room around the device to provide sufficient air flow for cooling.

First Things First

Before using your KOD-2400, there are a few things you should do and know:

- Check to see that your local power outlets supply the correct voltage for the AC adapter.
- Except for the hard drive compartment, do not open the device as there are no user-serviceable parts inside. For repairs, contact the local distributor, an authorized service center or Acesonic's U.S. headquarters.
- When the system will not be used for a long time, disconnect the power plug from the wall and remove all connecting cables for proper storage.



Rear Panel

Table of Contents

Getting Started.....	2	Searching Song in Single Screen Mode	9
Player Specifications.....	3	Searching Song in Dual Screen Mode	10
SD/USB Specifications (Compatible Media).....	3	Basic Karaoke Functions (Dual Screen Mode)..	13
Video Signal Formats.....	3	Advanced Computer Program Function.....	13
Audio Signal Formats.....	3	Backup.....	13
Cleaning.....	3	Add Songs.....	13
Front/Rear Panel Functions and Operation	4	Troubleshooting	15
Remote Control Functions.....	5	Safety, Warnings and Precautions.....	16
KOD-2400 Connections.....	6-7	Technical Specifications	18
Power Connection.....	8	FAQ (Frequently Asked Questions).....	18
How to Turn Off Correctly	9	Register 6 month free New Songs Download Account	19
Basic Karaoke Functions	9		

NOTE

Your Acesonic KOD-2400 Karaoke-On-Demand arrives with everything you need to start making music and performing except a microphone and speakers. These can be obtained from Acesonic, or you can use any standard audio equipment that conforms to contemporary standards.

Getting Started

Your Acesonic KOD-2400 Karaoke-On-Demand Jukebox is designed for years of enjoyment. Please take a moment to review the following instructions for proper use and care of the player.

Included Accessories

Your KOD-2400 includes the following items:

- ACESONIC KOD-2400 Karaoke Player (1)
- Audio/Video Connecting Cable (1)
- Remote Control (1)
- USB Male/Male Cable (1)
- HDMI Cable 10FT (1)
- VGA Extension Cable 10FT (1)
- Network Connecting Cable, Cat 5E 10FT (1)
- ACESONIC 19" Black Touch Screen (1)
- Power Adapter and Power Cord (1)
- Touch Screen Mouse Cable, Y-Shape (1)
- User Manual (1)

If your box is missing any of these items, contact your Acesonic dealer.

Precautions

Player precautions:

- Avoid moisture, water and dust.
- Do not place the player in a moist environment or where dust will build up, such as near a fan.
- If exposed to water, immediately turn off the player and unplug. Consult your dealer or an authorized service center — using the player in this state could cause fires or fatal electric shocks.
- Avoid high temperatures. Do not place the player in direct sunlight or near any heaters.
- Unplug the player when it will not be in use for an extended period of time.
- Use the plug, not the cord, to disconnect the player from its wall outlet.
- Never handle the power cord with wet hands. Replace the cord if it is damaged or if wires are exposed, and check it every few months for signs of wear and use.

Installation precautions:

- Select an area that is level, dry and has a moderate temperature all year.
- Do not use the player on its side.
- Do not place the player next to items that vibrate,

such as speakers.

- Do not put heavy objects on the top of your player.
- Allow space for your player to ventilate. The vents on your player are designed to circulate air and moderate its internal temperature. Blocking these vents may damage the player.

User Repair Precautions

No parts of this player are to be serviced by the user. If the player fails to operate or if you feel it needs servicing, turn off the player, unplug it and contact an Acersonic dealer or service center.

Player Specifications

- One (1) year manufacturer warranty
- Lifetime technical support
- Worldwide video compatibility with settings for both NTSC and PAL video formats
- Universal power supply: AC 100 ~ 240V
- Player dimensions: 430mm (W) x 305mm (D) x 64mm (H)
- Designed in the U.S.A.

USB Specifications (Compatible Media Formats)

Your KOD-2400 is a robust player that can accept a wide variety of media formats (USB flash/thumb drives formatted in FAT32).

- MPEG1 (dat, mpg)
- MPEG2 (vob, mpg)
- MPEG4 (avi, divx, xvid)
- CDG + MP3

Some methods of encoding (“ripping”) audio and video formats may affect playback. Use standard or pre-set encoding settings, if possible.

Files defect may also affect video quality.

The media formats not described in this manual are not compatible with the unit.

Video Signal Formats

The KOD-2400 supports NTSC, a broadcast format generally found in the U.S., Canada, most countries in South America, Japan, South Korea and the Philippines.

The KOD-2400 also supports the PAL format, which is used in many parts of Europe, Asia and South America.

Check your video device to see which standard it is compatible with.

Audio Signal Formats

The KOD-2400 features RCA stereo outputs.

Other features

The KOD-2400 is a multi-function professional hard drive Karaoke-On-Demand jukebox. This KOD is perfect for Club, DJs, KJs, Pub, rentals, restaurants, other public entertainment or if you simply want to have the ultimate karaoke system for any occasions!

- Supports High Capacity Of Hard Disk (up to 4TB).
- Easy to add songs from the PC program (only standard MPEG1, MPEG2 & MPEG4 supported).
- Easy to find your songs. You can search songs by Artists, Song Title, Genre, Language, and Song Number.
- Playback songs and pictures from SD cards or USB flash drivers.
- Use a mouse, remote controller or touch screen to operate the system.
- Full karaoke function.
- Save your favorite songs to your personal account (by number). Next time, simply login to your account to load all your favorite songs.

Cleaning

- Use a soft cloth to clean the surface of the unit.
- Always wipe from the center to the edges.
- DO NOT use circular motions.
- DO NOT use household cleaning products on the unit, unless they are specifically formulated for cleaning player products.

Reminder: Never attempt to play cracked or unsupported files with your player. It may cause the player to malfunction.



Front Panel Functions and Operation

1. **POWER:** Press this button to toggle the KOD-2400 on and off. Turning off the power on the player's front panel will not allow it to be powered on by the remote control.
2. **USB:** This interface allows the KOD-2400 to access mass storage devices such as USB/flash/thumb drives as long as they are formatted as FAT32 (Supports up to 16GB).
3. **REMOTE SENSOR:** Receive signals from the remote controller.
4. **ENTER:** Press this button to confirm selections.
5. **CANCEL:** Press this button to cancel or clear inputs.
6. **VOCAL:** Press this button to isolate the left or right audio channel.

7. **RETURN:** Press this button to return to the previous menu or last step.
8. **NUMERIC KEYS:** Press these buttons to input song numbers.
9. **DELAY CONTROL:** This switch control effecter.
10. **ECHO CONTROL:** Press to adjust the echo of a karaoke singer during their performance.
11. **VOL CONTROL:** This switch control volume.
- 12-13. **MIC 1 & 2:** Microphones input jacks
14. **TRABLE:** This switch control high sound.
15. **BASS:** This switch control bass sound.



Back Panel Functions and Operation

1. **MOUSE INPUT (Green):** For connecting a PS/2 mouse or touch screen mouse connect.
2. **KEYBOARD INPUT:** For touch screen, extension control panel & MCU updating.
3. **VGA OUTPUT:** For connecting a Touch Screen or a Monitor screen.
4. **EXT INPUT:** For Acekaraoke reserved.
5. **SATA 1 &2 PORTS:** For connecting the two internal SATA hard drives.
6. **IR PORT:** For Acekaraoke reserved.
7. **USB PORT:** For support USB devices play and add new songs.

8. **HDMI PORT:** For connecting to TV or Amplifier.
9. **TV-AUDIO-L OUTPUT:** This connection is for the RCA audio output.
10. **TV-AUDIO-R OUTPUT:** This connection is for the RCA audio output.
11. **TV-VIDEO-1 OUTPUT:** This connection is for the RCA video output.
12. **TV-VIDEO-2 OUTPUT:** This connection is for the RCA video output.
13. **Power Input:** AC 100 ~ 240V / 50~60 Hz

Note: MOUSE PORT can connect to a mouse or touch screen. Please select the right one for your touch screen according to the type of connection.



Remote Control Functions

1. **POWER:** Press this button to toggle the KOD-2400 on and off. Using the remote POWER key will put the KOD-2400 in standby. Using the POWER button on the player's front panel will shut it down completely. **Power off password: 999999** for save shutdown.
2. **MENU:** Main Page.
3. **b / #:** KEY +/- CONTROL
4. **VOLUME + -:** Press this buttons to adjust the music volume.
5. **PAUSE/PLAY:** Press this button to begin play; press again to pause and press it again to resume.
6. **NEXT:** Press this button to stop playing current song and play the next song.
7. **PLAYLIST:** Songs in Playing Queue.
8. **PRIORITY:** Add the song as First into Playing Queue.
9. **REPLAY:** Press this button to repeat the current playing song.
10. **EXPRESSION:** Expression.
11. **VIDEO:** Touch Screen show video like TV.
12. **PgUp/PgDn:** Press this button to advance or return to previous pages.
13. **SETUP:** Press this button to set the KOD-2400's user preferences. Setup Password is **4652**.
14. **VOCAL:** Press this button to isolate the left or right audio channel.
15. **ARROW KEYS:** Up/Down/Right/Left Arrow Keys.
16. **OK:** Press this button to confirm selections.
17. **USB:** Press this button to play songs from USB.
18. **RETURN:** Press this button to return to the previous menu.
19. **KARAOKE:** Press this button to return to karaoke mode.
20. **WORD COUNT:** Show word number.
21. **FAVORITE:** Press this button to show the Favorite page.
22. **ARTIST:** Press this button to search by artist.
23. **TITLE:** Press this button to search by song title.
24. **LANGUAGE:** Press this button to search by language.
25. **CATEGORIES:** Press this button to search by category.
26. **NUMERIC KEYS:** Press these buttons to input song selections.
27. **TV / MONITOR:** Press this button switch TV/Monitor.
28. **CANCEL:** Press this button to cancel selections.

KOD-2400 Connections



A/V, Monitor, Touch Screen Connections

Ensure that your KOD-2400 is turned off and unplugged before connecting it to a TV/Touch Screen and audio system.

Also, check that your audio and video components have the appropriate inputs. Refer to their manuals if you are not sure.

If you are going to use dual-screen mode, make sure you have a touch screen or a PC monitor + a PS/2 mouse connecting your KOD-2400 as a purely karaoke device. Refer to the following diagram.

If you use touch screen, the touch screen cable connect to KOD-2400's mouse port.

Inputs for the microphones will be found on the front panel of the KOD-2400.



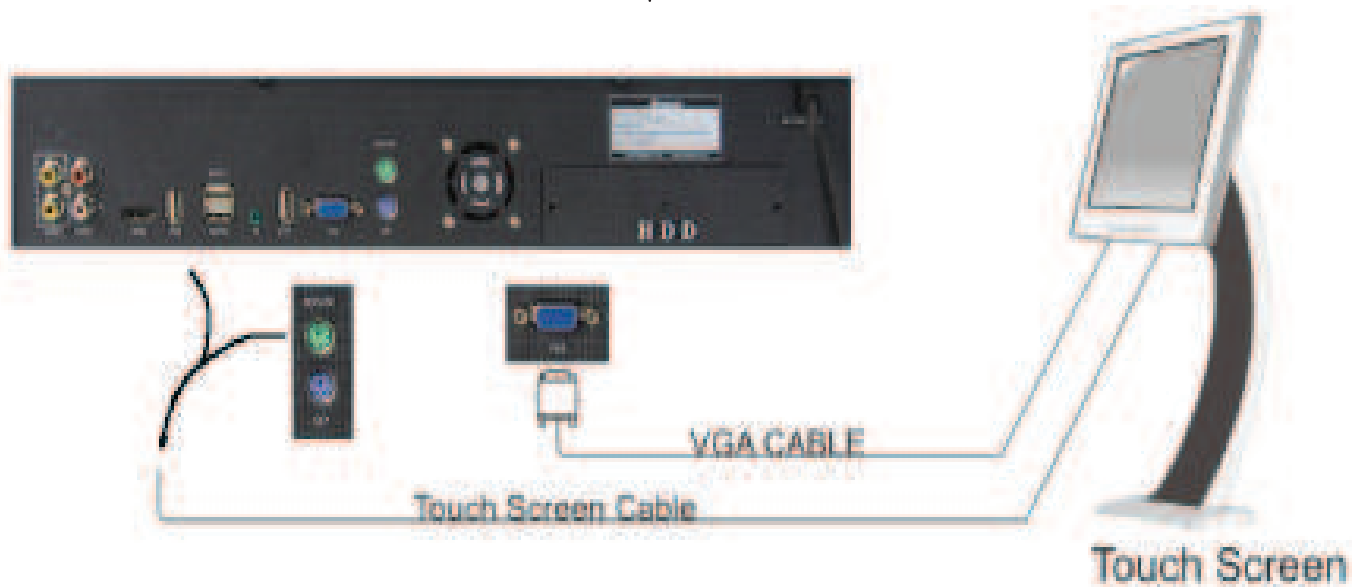
External Storage Devices

The KOD-2400 can accept playing music and pictures from most USB drives. These drives are also called thumb and flash drives and are often used to store and transport music files. To access the music on these devices, insert the flash drive or the USB cable into the USB port illustrated above.

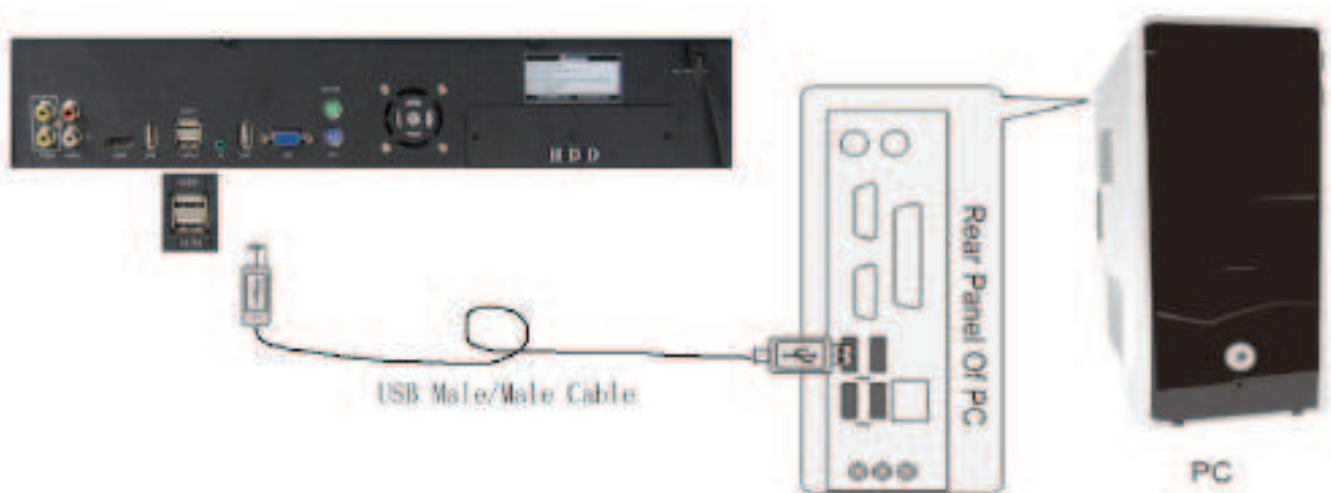
Please note that the KOD-2400 is not a computer. It cannot support larger, desktop-sized hard drives, or any Flash Drive device with an abundance of files. External storage devices will not be recognized if unsupported file types are detected.

For best compatibility, format flash in FAT32. If you have problems formatting in FAT32, please refer to your computer's operating manual.

Touch Screen Connection



SATA Connection



USB Male-to-Male Cable

Use an USB Male-to-Male Cable, your PC can access the Hard Disks and run KTVManager software to manage KOD-2400 song library.

Plug in KOD-2400's SATA 1/2 port and PC's USB port and then turn on the KOD-2400. Your PC will see one of the two Hard Disks in KOD-2400 player.

Run KTVManage.exe, you can add songs into KOD-2400 and many things. We will introduce it's functions later.

Power Connections

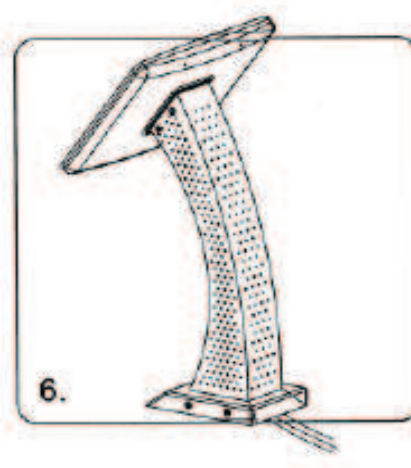
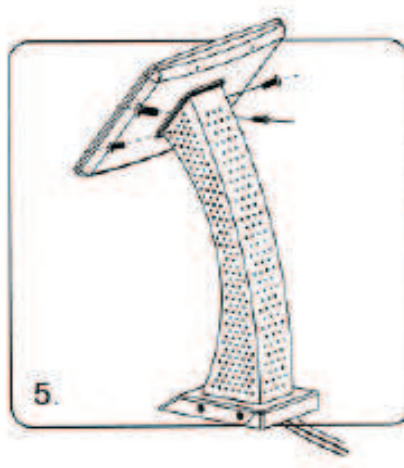
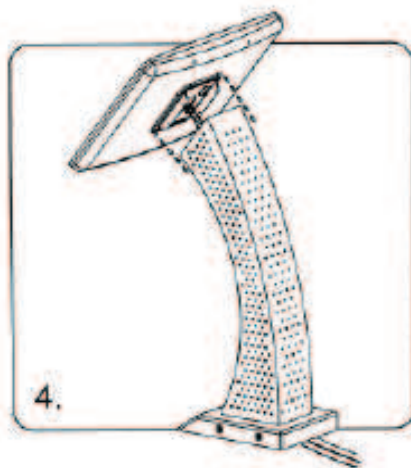
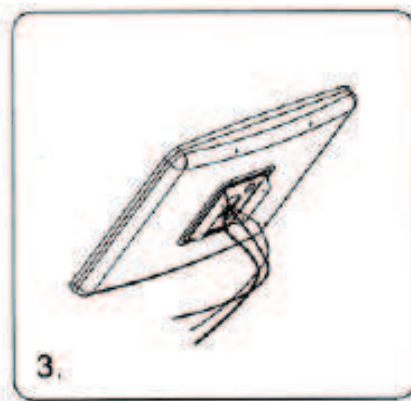
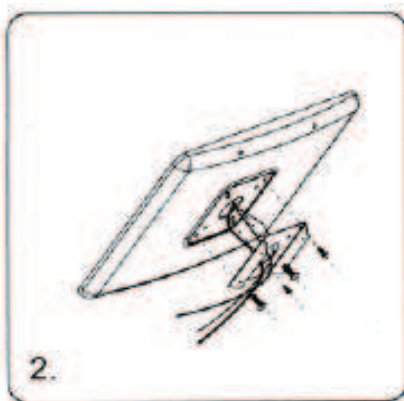
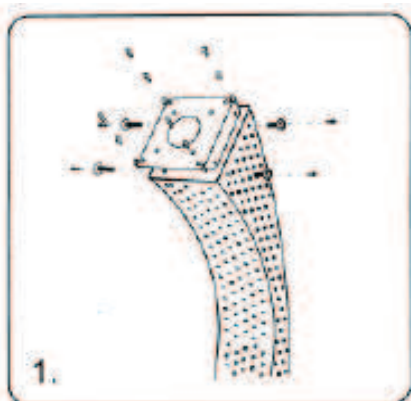
When you have completed connecting your KOD-2400 to your video and audio components, refer to the diagram below to connect the player to the power

cord and an appropriate electrical outlet.

Please note that the KOD-2400 uses 100 V to 120 V, at 50/60 Hz. It is compatible with electrical outlets in North America and all US states.



Installation of Foot Stand



How to turn the KOD-2400 Off Correctly

1. Press and hold [POWER] on the remote controller for few seconds.
2. A text message will show up and ask you to input a password.
3. Input default password “999999” then press [ENTER] to confirm.
4. Press [ENTER] again to turn off the KOD-2400.
5. By doing these steps, the KOD-2400 is in standby mode.
6. If you want to power the KOD-2400 off, please press [POWER] on the front panel of KOD-2400.



Basic Karaoke Functions

Random Play

After the KOD-2400 boots up and it will play the hard drive's collections of songs randomly.

Auto Play List

If the auto play list is not empty, the KOD-2400 will play the songs in the list.

This mode is useful for competitions, demonstrations and background music.

Selecting Songs

The KOD-2400 offers a number of different ways to find, play and organize the songs you access the most.

Select by Song Number

1. Power on the KOD-2400 by pushing the POWER button on the front panel. A copyright notice page should show up immediately and the player will go through its boot process for a few minutes.
2. You are now in karaoke mode.
3. Press [6] key enter the page and then input its corresponding numeric code on your remote control using the NUMERIC KEYS. Songs and their codes may have been provided in a folder and the Song Book.
4. Push the [CANCEL] button if you've entered a wrong number.
5. Push [OK] to add song to the playlist and then it will start playing the songs.
6. Push [PRIORITY] to add the song at top in the playlist and it will play next.
7. Repeat step 3 to enter more songs.

Select by Singer

1. Push [1] to enter the page in which you can find the song by a singer.
2. Select a song using the Up/Down button in the remote control's DIRECTION CONTROL.
3. Push [OK] to add song to the playlist and then it will start playing the songs.
4. Push [PRIORITY] to add the song at top in the playlist and it will play next.

Prioritizing a Song

To move a song to the top of a playlist:

1. Select a song using the Up/Down button in the remote control's DIRECTION CONTROL.
2. Press the [INSERT] key.

Pressing [INSERT] instead of the [OK] key during song search will also put it at the top of the playlist.

Replaying a Song

To play a current song again from the start, press [REPLAY] on the remote control or the unit's front panel.

Skipping a Song

To skip a song, press the [NEXT] button on the remote control or on the unit's front panel.

Searching Songs in Single Screen Mode

Selecting Songs by Single Screen Karaoke Mode

1. Power on the KOD-2400 by pushing the POWER button on the front panel. A copyright notice page should show up immediately and the player will go through its boot process for a few minutes.
2. You are now in single screen karaoke mode.

3. Push the [MENU] key on your remote control or on the front panel of the player.

4. You will see a text-menu:

5. Navigate through the menus using the DIRECTION CONTROL on your remote. Push [RETURN] on the DIRECTION CONTROL to return to the last menu.

In single-screen play mode you can only use the remote controller to access all the below functions. Press [MENU] on the remote controller to display its text menu in single-screen play mode.

There is a number for each item shown on the TV screen. You can select the corresponding number to enter a category or press [▲▼◀▶] directly on the remote controller to move the cursor to the item you choose then press [ENTER] to access.

ARTIST:

Press [1] directly to enter “Artist” sub-menu or [▲ ▼] to select “Artist” then press [ENTER] to enter its menu and then you can select an artist according to the artist’s genre or select option “8” in the sub-menu to show all artists.

Tips: You can also press [ARTIST] on the remote controller to enter the “ARTIST” menu directly too.

SONG TITLE:

Press [▲, ▼] to select the “Song Title” then press [ENTER] or [2] directly to enter “Song Title” menu. Input the first letter of the song title to search a song. For example: Song title is “Pretty Girl”. You can input the first letter of the song title “P”, then all songs starting with the letter “P” will be listed on the screen automatically.

Tip: You can also press [TITLE] on remote controller to enter “Song Title” menu directly too.

GENRE:

Press [▲, ▼] to select “Genre” then press [ENTER] or [3] directly to enter its menu.

Tip: You can also press [GENRE] on the remote controller to enter the “Genre” menu directly too.

LANGUAGE:

Press [▲, ▼] to select “Language”, then press [ENTER] or [5] directly to enter then search a song by language.

Tip: You can also press [LANGUAGE] on the remote controller to enter the “Language” menu directly too.

NEW RELEASES:

Press [▲, ▼] to select “New Releases” then press [ENTER] or [6] directly to enter then select a song from the latest updated song list.

Tips: Press [RETURN] to return to the previous menu; press [MENU] again to exit.



Searching Song in Dual Screen Mode

Make sure your karaoke mode is in Dual Screen Karaoke Mode to access all functions (See P. 15 for more information).

1. Power on the KOD-2400 by pushing the POWER button on the front panel. A copyright notice page should show up immediately and the player will go through its boot process for a few minutes. Then the player will show the Main Page.



2. You are now in dual screen karaoke mode. If you are in the single screen karaoke mode, please see P.15 for how to change to dual screen mode.

3. Touch the  icon on your touch screen or use your mouse to click the  icon.

4. You will see the following menu:

ARTIST:

Search songs by artist

1. Touch or click  then it will show a submenu of “ARTISTS”.



2. In this menu, you can use “INPUT INITIAL LETTER” box to find your desired artists. Artists can be found by the first letter of each word in artist’s name when pressing the “FIRST LETTER SEARCH” icon.



The search for “Air Supply”, for example, would be for the letters “A” and “S”. Press “ [Delete]” icon to delete wrong inputs.

3. After finding the artist, press the Artist’s picture to find desired songs.

SONG TITLE:

Search Song by Song Title

1. Touch or click **2 歌名** **Title** then it will show a submenu of “TITLE”.



2. In this menu, you can use “INPUT INITIAL LETTER” box to find your desired songs. Songs can be found by the first letter of each word in the song title’s name. The search for “Amazing Grace”, for example, would be for the letters “A” and “G”. Press [Delete] icon to delete wrong entries. * This function is only used for Chinese and English songs only.

3. After finding the desired songs, use your finger to touch each song name to add songs to the playlist.

LANGUAGE:

Search songs by Language

1. Touch or click **3 語言** **Language**. The “LANGUAGE” submenu will appear.



2. Touch or click your desired language to search songs.

SONG NUMBER:

Search songs by Song Number

1. Touch or click **編號 6** . The “SONG NUMBER” submenu will appear.



2. To access a song on the KOD-2400's hard disk drive, press or click its 6 corresponding numeric code on the song number menu using the NUMERIC KEYS. Songs and their codes may have been provided in a folder.

3. The song title will be displayed if the numbers you input are found in the song database.

4. Press or click ENTER to add the song to the reserved list.

MOST POPULAR:

Search songs by Most Popular

1. Touch or click **排行 7** . The “MOST POPULAR” submenu will appear.



2. Top Hist songs: The songs that have been played the most will be listed in this category.

TOUCH WRITING:

Search Song by New Releases

1. Touch or click **手寫 9** . The “Touch Writing” submenu will appear.



2. The latest updated songs can be found in this category.

Advanced Computer Program Functions

FILE:

Please **DO NOT** rename or delete any system files on the hard drive, otherwise, the KOD will not work properly.

Backup

做歌庫管理前，做好備份工作。

用一條USB連線連接電腦和KOD-2400的SATA1或SATA2接口。

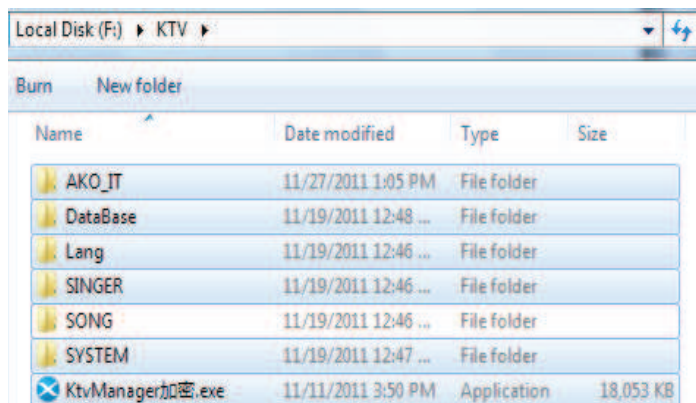


Use USB-to-USB to connect your PC and KOD2400's SATA1 or SATA2 USB port.

Turn on KOD2400 and your PC, suppose driver F:\ is one of the two 2TB Hard Disks,

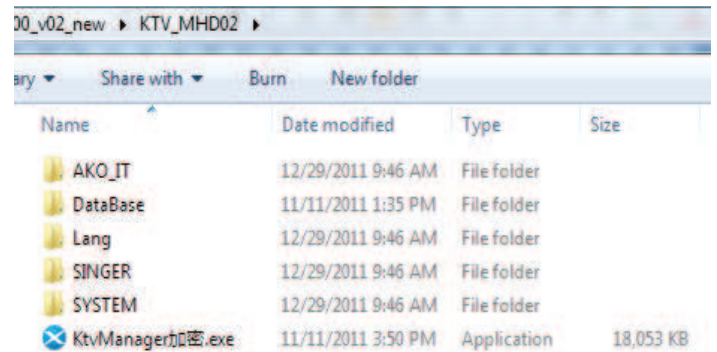
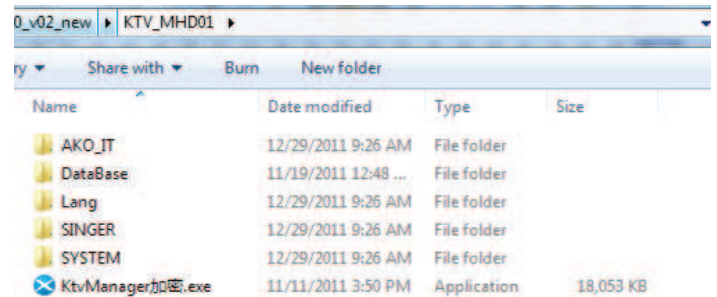
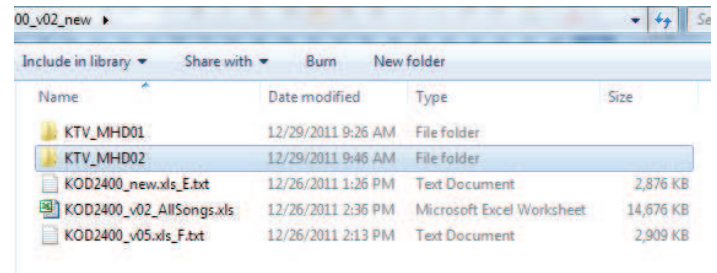
建議做整盤的備份。起碼要分別備份兩個盤的文件夾：\KTV\SYSTEM\

Backup \KTV\SYSTEM\ directory



Not include SONG\ directory
SONG\ 文件夾是用來放歌曲的，通常會很大。

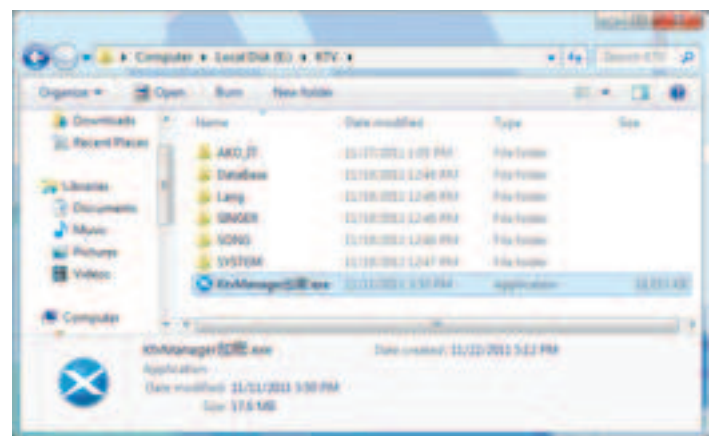
Save backup to other place. 另存到其它硬盤。

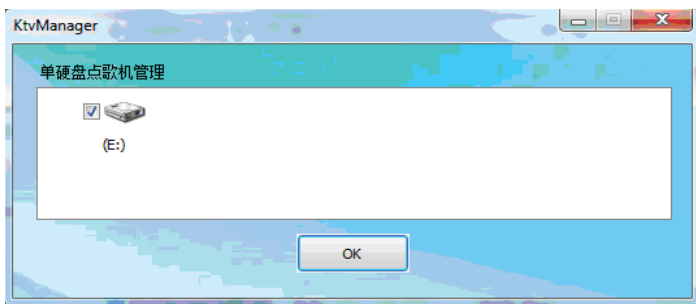


ADD SONG

電腦連接點歌機加歌：

USB線連接電腦和點歌機，執行點歌機硬盤下的KTV\KtvManager.exe





有些操作需要同時勾選連接兩個硬盤。



添加(A)

Suppose we add this song. 例如我們要加這首歌曲：

Name	Date modified	Type
殷秀梅-母亲的手[国].mpg	12/11/2011 5:56 PM	Movie Clip



In this windows, input the song's information :

- 歌名:
- 歌曲編號: 確定選一個沒有在使用的歌曲編號
- 歌星:
- 語言:
- 來源: 通過瀏覽找到準備好的歌曲
- 加密方式: 用戶一般選用“無加密”
- 伴唱音軌: 右聲道 (一般是 左聲道 / 原唱, 右聲道 / 伴唱)

来源: Z:\2011 New Releases\2011

来源: 殷秀梅-母亲的手[国].mpg

添加歌曲

歌名: 母亲的手 拼音: MQDS

歌曲编号: 170621 歌星: 殷秀梅

是否MTV: 是 语言: 国语

分类: 流行 伴唱音轨: 音轨2

音速: 10, 10 Length: 4 点击: 0

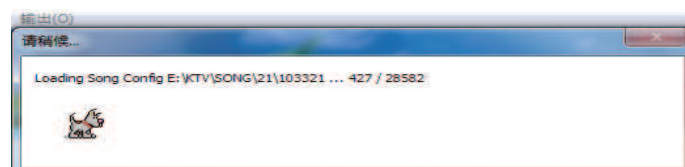
来源: DVD新歌包月 國語新歌10 存放: E:\

加密方式: 无加密 生成预览文件

After add songs, you need do “輸出(O)”



選擇: 繁體中文



ADD AUTO PLAY LIST

Run KTVManager.exe

管理(O)

Go: 管理 管理 -> 公播列表管理



從左邊窗口選擇歌曲，添加到右邊的窗口，這些就成為公播歌曲。

修改完成后，做一次：輸出 -> 繁體中文 -> 確定

Troubleshooting

For common problems, please consult the chart below. If these suggestions do not solve your problem, please call Acesonic Customer Service at (626) 820-0645.

No Sound

- Inspect the KOD-2400 to confirm it is connected to audio equipment and that the audio equipment or TV is connected to the player.
- Check that volume levels on TVs and audio equipment are audible.
- Check the cables connecting the player to audio equipment or TV.

No Picture

- Check connections between TV and KOD-2400.
- Check the TV to see if its on the correct input or channel to view the player.

Distorted Sound

- Check connections on the KOD-2400 and audio equipment or television.
- Check input and volume settings on the audio equipment or television.

Distorted Picture

- Check connections between TV and KOD-2400.
- Check the TV to see if its on the correct input or channel to view the player.
- Select one video output — RCA Video — and inspect the video cord.

Selected Song Won't Play in Hard Disk Drive Mode

- Confirm the song is on the hard disk drive and that it hasn't been deleted.

No Power

- Check to see that the AC power cord is plugged into the wall and the player.

No Microphone Volume

- Check microphone connection.
- Check microphone power.
- Set microphone volume on the front panel.
- Set microphone volume on the remote control.

Remote Won't Work

- Ensure there's a clear path between the KOD-

2400 and the remote control.

- Replace batteries.
- Try the remote out close to the player, pointing directly at the sensor.

KOD-2400 Boots Up to a Blue Screen

- There may be possible hard drive damage or data-base corruption. Call Acesonic customer service at (626) 820-0645.

PC software & Firmware updated

- For a latest PC software & the unit's firmware updated, please visit <http://www.acesonic.com/>.

Safety, Warnings and Precautions

Mises en garde, précautions et procédures de sûreté

The lightning-with-arrowhead symbol inside a triangle alerts the user that potentially dangerous voltage in the product enclosure may constitute a risk of electric shock.

The exclamation point within a triangle alerts the user to important operating, maintenance, and servicing information in this User Manual.

CAUTION

To reduce the risk of electrical shocks, fire, and possible injuries, you should not

- remove screws, buttons, antennae, jacks, or any part of the enclosure; or
- expose the product to rain or moisture.

FCC ADVISORY (U.S.A.)

1. This equipment has been tested and found to comply with the limits for a Class B digital device, pursuant to part 15 of the FCC Rules. These limits are designed to provide reasonable protection against harmful interference in a residential installation.

This equipment generates, uses, and can radiate radio frequency energy and, if not installed and used in accordance with the instructions, may cause harmful interference to radio communications. However, there is no guarantee that interference will not occur in a particular installation. If this equipment does cause harmful interference to radio or television reception, which can be determined by turning the equipment

off and on, the user is encouraged to try correcting the problem by one or more of the following measures:

- Reorienting and/or relocating the receiving antennae
- Increasing the distance between the radio/TV equipment and the KOD-2400
- Connecting the radio/TV equipment to an outlet on a different circuit than the one into which the receiver is plugged
- If necessary, consulting the dealer or an experienced radio/TV technician for help

2. **IMPORTANT:** When connecting the KOD-2400 to audio equipment, use only high-quality, shielded cables such as what is supplied with this product. Follow all installation instructions do not modify the equipment in any way, as this could void your FCC authorization to use the device in the U.S.

FOR CANADA/POUR LE CANADA

Caution: To prevent electric shock, match the wide blade of the plug to the wide slot, and fully insert.

Attention: Pour éviter les chocs électriques, introduire la lame la plus large de la fiche dans la borne correspondante de la prise et pousser jusqu'au fond.

This product does not exceed the Class B limits for radio noise emissions from digital devices as set out in the Canadian standard for interference-causing equipment ("Digital Apparatus, ICES-003" from the Department of Communications).

Cet appareil numérique respecte les limites de bruits radio électriques applicables aux appareils numériques de Classe B prescrites dans la norme sur le matériel brouilleur ("Appareils Numériques, NMB-003" édictée par le Ministre des Communications).

Important Safety Procedures

1. Read and follow these instructions, keep them handy for reference, familiarize yourself with the product's operation, and heed all safety warnings.
2. Do not use this product near water, on wet surfaces, or in places where moisture may accumulate. Do not expose the device to dripping or splashing, and do not place items filled with liquids – such as vases, beverages, etc. – on top. Clean only with a dry cloth.
3. Do not block any ventilation openings or set device on carpets or rugs. Maintain sufficient room on all

sides for airflow.

4. Do not position the device on or near radiators, stoves, or other electrical equipment (such as amplifiers) that produce heat.

5. Do not defeat the safety purpose of a polarized or grounding-type plug. A polarized plug has two blades with one wider than the other, while a grounding-type plug has two blades and one prong. The wide blade and the prong are safety features. If the provided plug does not fit into your outlet, consult an electrician for replacement of the obsolete outlet.

6. Protect the power cord from being walked on or pinched, particularly where it is plugged in to an electrical socket and the point where it exits from the rear of the device.

7. Only use the attachments and accessories specified by the manufacturer.

8. Use only with a cart, stand, tripod, bracket or table specified by the manufacturer or sold with the device. When using a cart, use caution when moving the cart.

9. Unplug the product during lightning storms or when it will not be used for long periods of time.

10. Refer all servicing to qualified service personnel. Servicing is required when the unit has been damaged in any way, such as when the power-supply cord or plug is damaged, liquids have been spilled or objects introduced into the enclosure, the device has been exposed to rain or moisture, the product does not operate normally or it has been dropped.

11. Never push objects of any kind into this product, through jacks or other openings, as they may contact dangerous voltage points or short-circuit components, thus causing fire or electrical shock.

12. This product should be operated only from the type of power source indicated on the product label and in this User Manual. If you are not sure of the type of power supplied to your home, consult your product dealer or local utility.

13. An outside antenna system should not be located in close proximity to overhead power lines, or other electric light or power circuits, or where it can fall into such power lines or circuits. When installing an outside antenna system, be extremely careful not to touch such power lines or circuits, as contact with them could be fatal.

14. Do not overload wall outlets or extension cord as this can increase the risk of fire, power outages or electrical shock.

15. When replacement parts are required, be sure the service technician has used replacement parts specified by the manufacturer or with the same characteristics as the original part. Unauthorized substitutions may result in fire, electric shock or other hazards.

16. Following any servicing or repair of this product, ask the service technician to perform the appropriate safety checks to ensure the product is in proper operating condition.

17. The product should not be mounted to walls or ceilings except as recommended by manufacturer, with mounting hardware approved by manufacturer.

18. If your product is not operating correctly or exhibits a marked change in performance, and you are unable to restore normal operation by following procedures in this User Manual, do not attempt to service it yourself. Opening the enclosure may expose you to dangerous voltage or other hazards. Refer all servicing to qualified service personnel.

NOTE: With the proper care and maintenance, your KOD-2400 Karaoke-On-Demand Jukebox will give you years of dependable, enjoyable use. Make sure you are using proper power sources and good (unfrayed) cables at all times. Remember, any alterations or user repairs performed on the device voids your warranty.



Technical Specifications

Signal Format System	NTSC, PAL
Frequency Response	20Hz–20KHz \pm 3 dB
Signal-to-Noise Ratio	> 80 dB
Channel Separation	> 70 dB (1 KHz)
Dynamic Range	> 70 dB (1 KHz)
Audio Output (Analog)	2V \pm 10% / load impedance 75 Ω
Video Output	1Vp-p \pm 20% / load impedance 75 Ω
Microphone	\varnothing 6.35mm single plug
HDD	Two 3.5-inch FAT32 SATA, max 2000GB X 2 (4TB)
AC Power	AC 100V–120V (50/60Hz)
Power Consumption	< 54W
Dimensions	430mm (W) x 305mm (D) x 64mm (H)
Weight	(7.10 lbs.)

FAQ (Frequently Asked Questions)

1. No microphone sound? **Check if the volume of microphone is off.**
2. Remote controller doesn't work? **Check batteries.**
3. Can you save a queue list? **No, but you can save your favorite songs to My Favorite Folder.**
4. No picture? **Check if all video connections are correctly. If so, connect the KOD-2400 to the TV direct and see if a picture shows up.**
5. How do I connect the KOD-2400 hard disk drive (HDD) to a PC or laptop? **If your PC or laptop doesn't have a SATA connection, you need to use an**

External Hard Drive SATA Enclosure /Docking Station, 3.5-inch form factor with a USB interface, to connect the KOD-2400 HDD to your computer.

6. How many songs can I record to my KOD-2400 HDD? **This depends entirely on the HDD capacity and the file format(s) in which you choose to save your songs.**
7. No Sound? **Check if all audio connections are correct. If so, connect the KOD-2400 to the TV directly and see if a picture shows up.**
8. Song cannot be played? **Check if the song exists in the database.**

New Songs Download Account Register

Purchase of KOD-2400, you can register 6 months free account for downloading Acesonic new songs. Please send Email at **freesongs@acekaraoke.com** with following information:

Reference Number(Sales Order Number, etc.):

Name:

Phone Number:

Address:

Email address:

Qualified customer will get an email with the userid, password and our FTP server address.



KOD-2400

Karaoke-On-Demand Jukebox

KOD-2400

Karaoke-On-Demand Jukebox

One (1) Year Manufacturer Warranty

Lifetime Technical Support

Designed in U.S.A.

Technical Support: (626) 820-0645

techsupport@acesonic.com

Web site: www.acesonic.com

Acesonic USA, Inc.

161 S. 8th Avenue

City of Industry

CA 91746-3208

U.S.A.

© 2012 Acesonic USA, Inc. • All rights reserved